

KONIA PARK II





Set in the prestigious hillside suburb of Konia, Konia Park 2 comprises 16 detached villas with beautiful countryside views. The contemporary designs are available in three styles, offering varying floor plans to suit individual lifestyle requirements. All enjoy a high quality finish internally and externally. The architect has used clean modern lines with natural materials and open spaces to achieve a perfect balance of design and practicality.

KONIA PARK II

A GREAT LOCATION



SHOPPING

5 mins



TOWN
CENTRE

5mins



HOTELS

12 mins



HIGHWAY

3 mins



BEACH

12 mins



BANK

6 mins



PORT

15 mins



Pafos 12 mins



Larnaca 80 mins



Troodos 73 mins



LIMASSOL

40 mins



NICOSIA

95mins



KONIA PARK II



KONIA PARK II



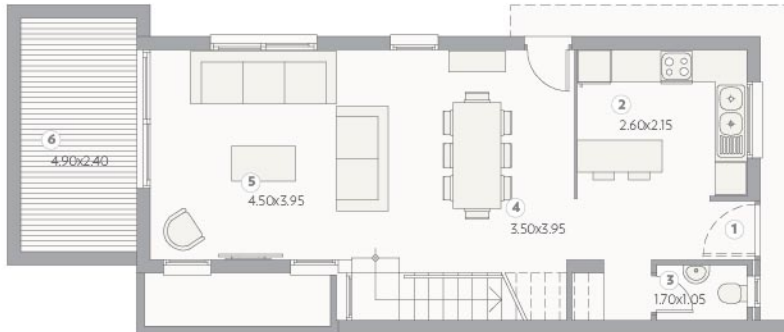
KONIA PARK II

SITE PLAN

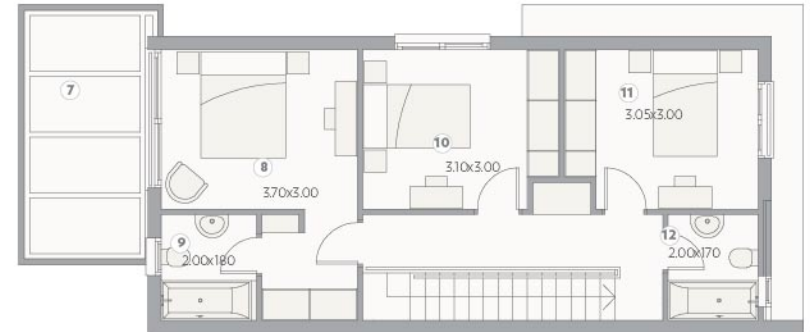


KONIA PARK II

SAMPLE 3 BEDROOM VILLA



GROUND FLOOR



FIRST FLOOR

Key

- | | |
|---------------|--------------------|
| ① ENTRANCE | ⑦ PERGOLA |
| ② KITCHEN | ⑧ MASTER BEDROOM |
| ③ WC | ⑨ ENSUITE BATHROOM |
| ④ DINING ROOM | ⑩ BEDROOM 2 |
| ⑤ LIVING ROOM | ⑪ BEDROOM 3 |
| ⑥ UN. VERANDA | ⑫ BATHROOM |

KONIA PARK II