



OASIS PARK





Oasis Park is a distinctly Mediterranean development offering contemporary apartments and houses in beautifully landscaped grounds. It is situated in one of the most popular and convenient areas of Pafos, just a ten minute walk from many amenities.



A GREAT LOCATION

SHOPPING

5 mins

TOWN
CENTRE

5mins

HOTELS

2 mins

HIGHWAY

1 mins

BEACH

2 mins

BANK

2 mins

PORT

8 mins



Pafos 18 mins



Larnaca 80 mins



Troodos 73 mins

LIMASSOL

40 mins

NICOSIA

95mins







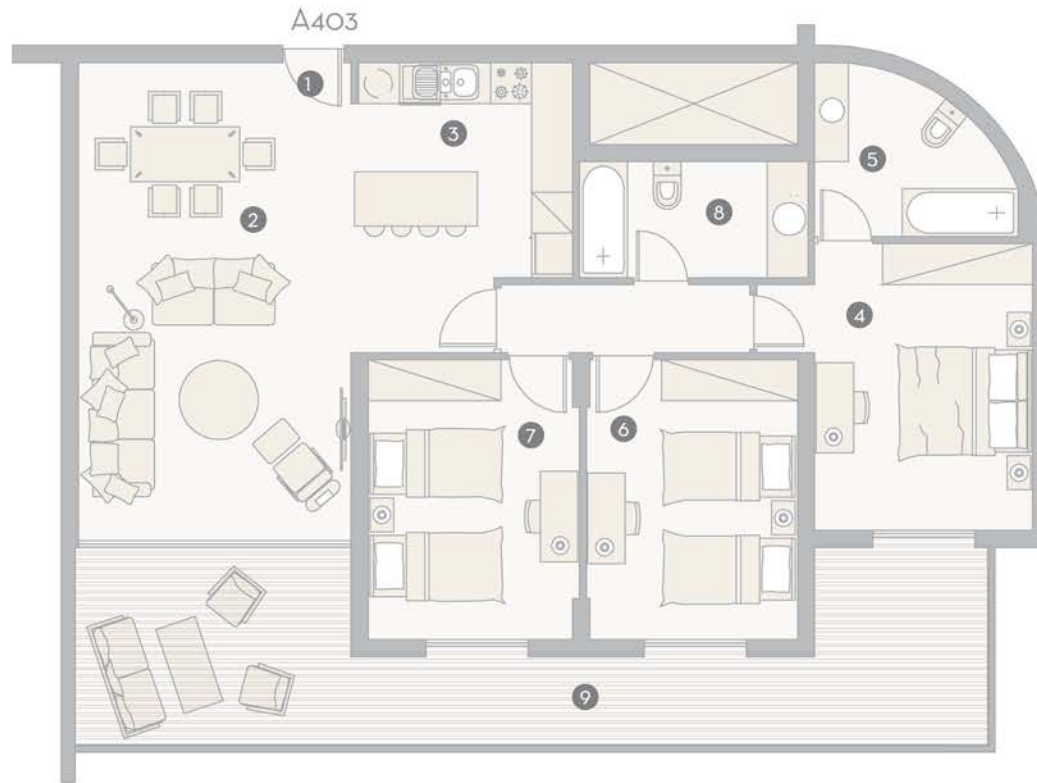




SITE PLAN



SAMPLE 3 BEDROOM APARTMENT



A403

- | | | |
|--------------------------------|-----------------------------------|---------------------------|
| ① entrance | ④ bedroom 1, 3.20x3.60 | ⑦ bedroom 3, 3.10x3.50 |
| ② living/dining room 4.00x7.00 | ⑤ ensuite bathroom 2.55/2.05x2.40 | ⑧ bathroom 3.35x1.70 |
| ③ kitchen 3.15x3.15 | ⑥ bedroom 2, 3.10x3.50 | ⑨ veranda 13.50x3.00/1.40 |

SAMPLE 2 BEDROOM APARTMENT

