

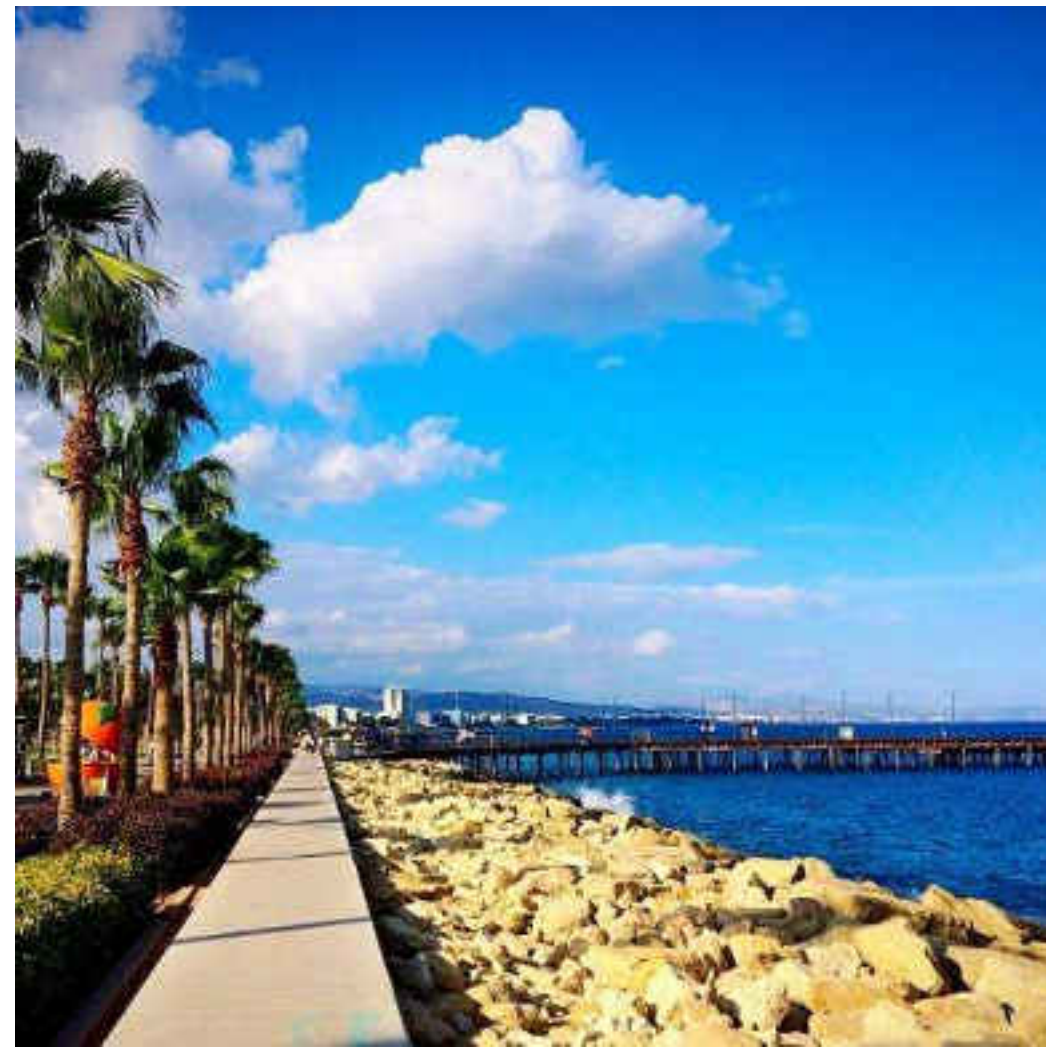
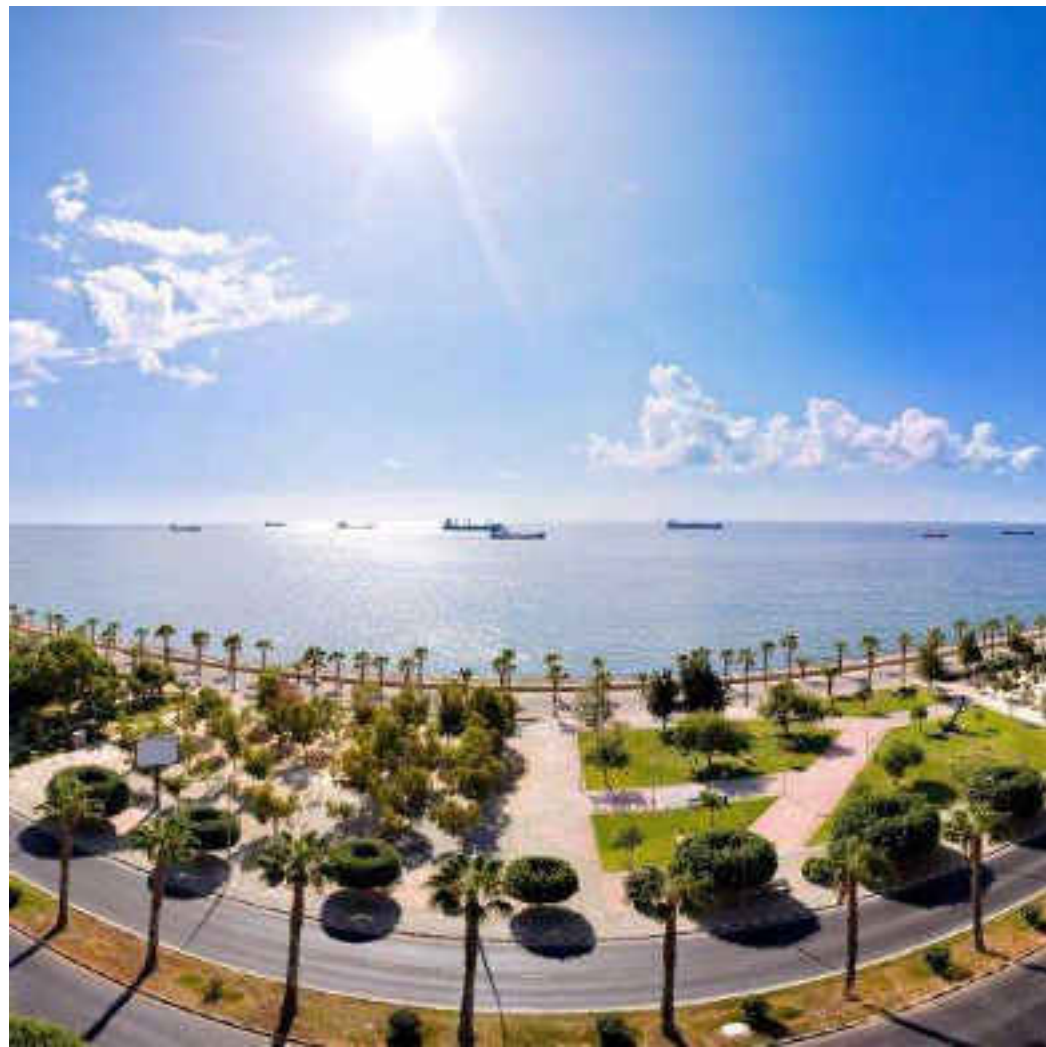
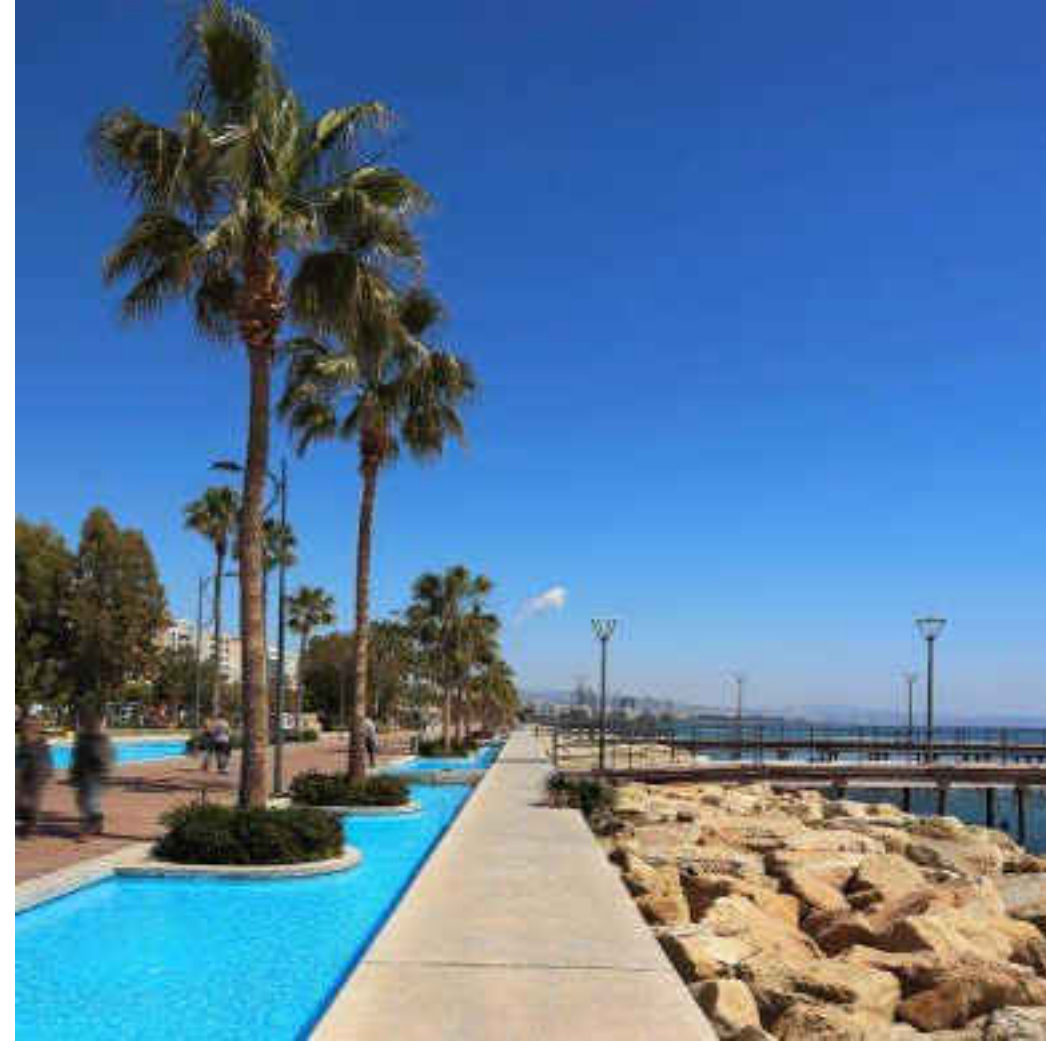
ARIA/RESIDENCES



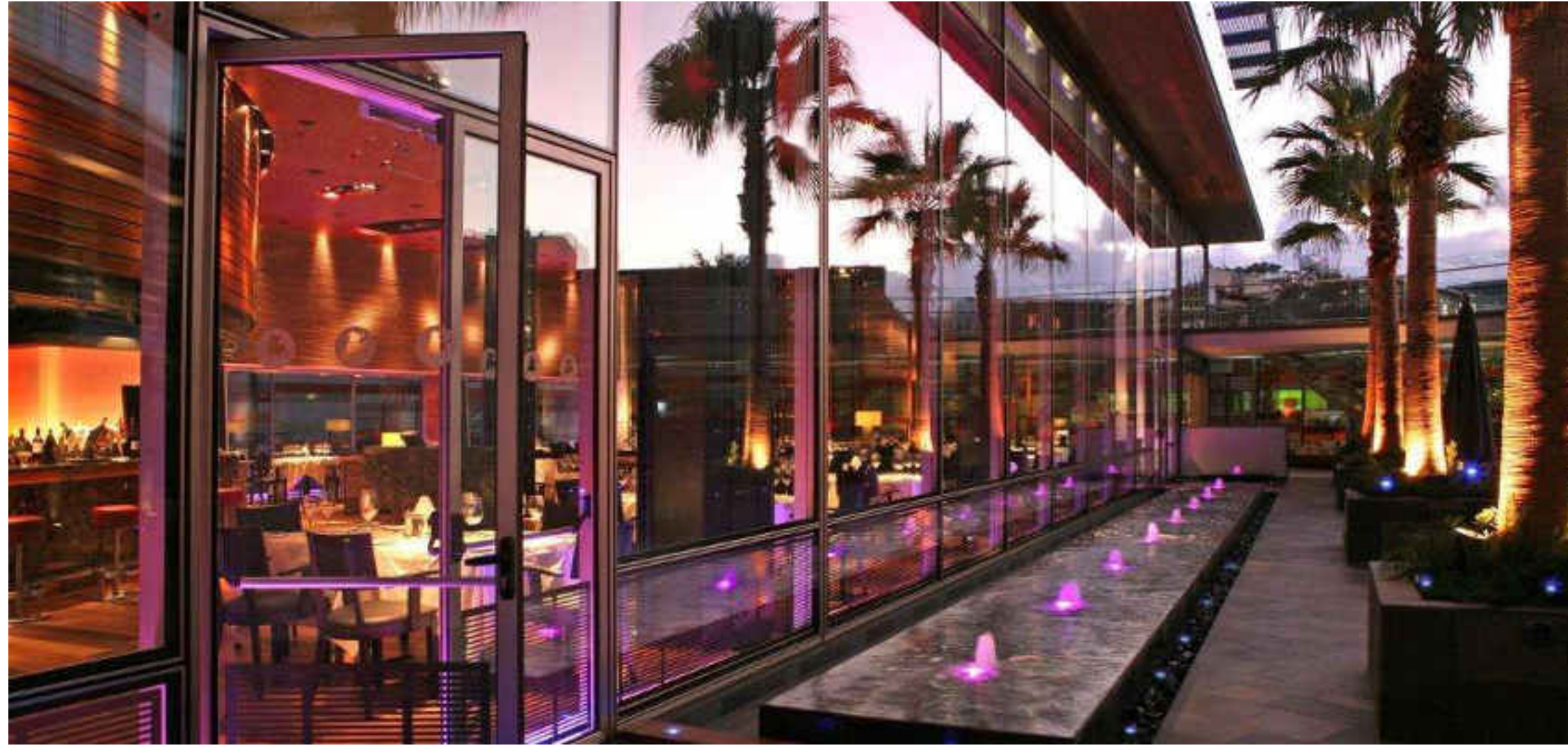
LIMASSOL

THE CITY OF CHOICE

Limassol is Cyprus' cosmopolitan capital, its most important business district and a vibrant modern playground. It is consistently ranked as one of the world's leading cities for quality of life. Nowhere in Cyprus is there a richer mix of modern culture and fascinating heritage.



Limassol's enchanting promenade is situated on the prime seafront boulevard. It is the ideal place for walking, jogging, spending time on the beach or taking time for peaceful contemplation under the shade of a mature palm tree.



Vibrant Limassol

The city offers an active, vibrant and varied choice of restaurants, stylish cafes , bars and chic lounges.





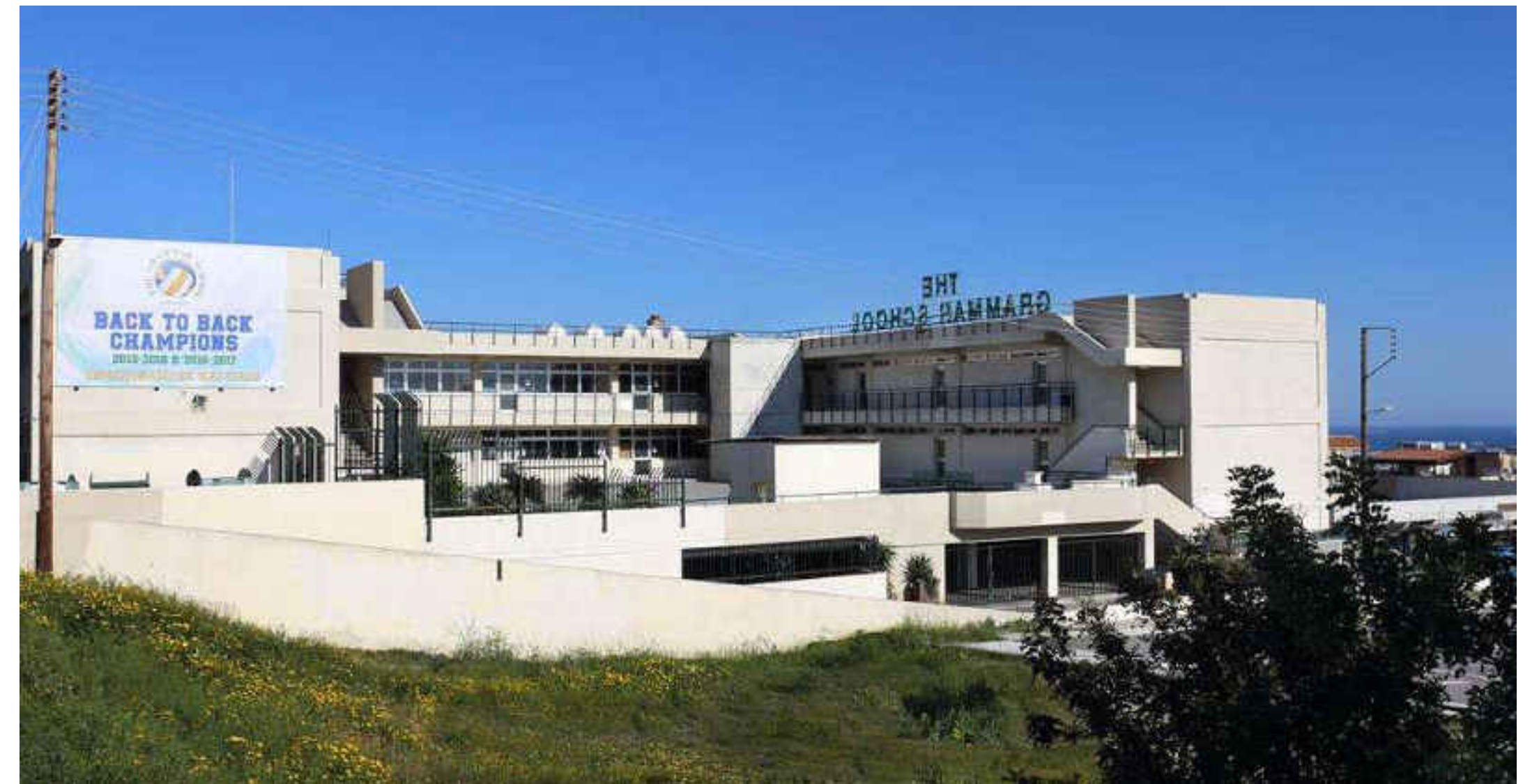
A MIX OF FINE AND CASUAL DINNING

An Adventure in Taste

Limassol's gastronomic scene comprises a delicious mix of fine and casual dining. It offers a great selection of cuisines as well as local traditional food.

Private Schools

There are a number of private schools (Greek, English, French, and Russian) available in Limassol.



Luxury Shopping



Limassol's shopping is refined. An abundance of global luxury brands
serve the exquisite tastes of the town's
stylish residents and visitors.



LEISURE

A year-round programme of major international events.

Fine-art galleries, historic sites, museums and theatres.



LIFESTYLE

Limassol is an important maritime centre, a popular cruise destination and a private yachting hub.

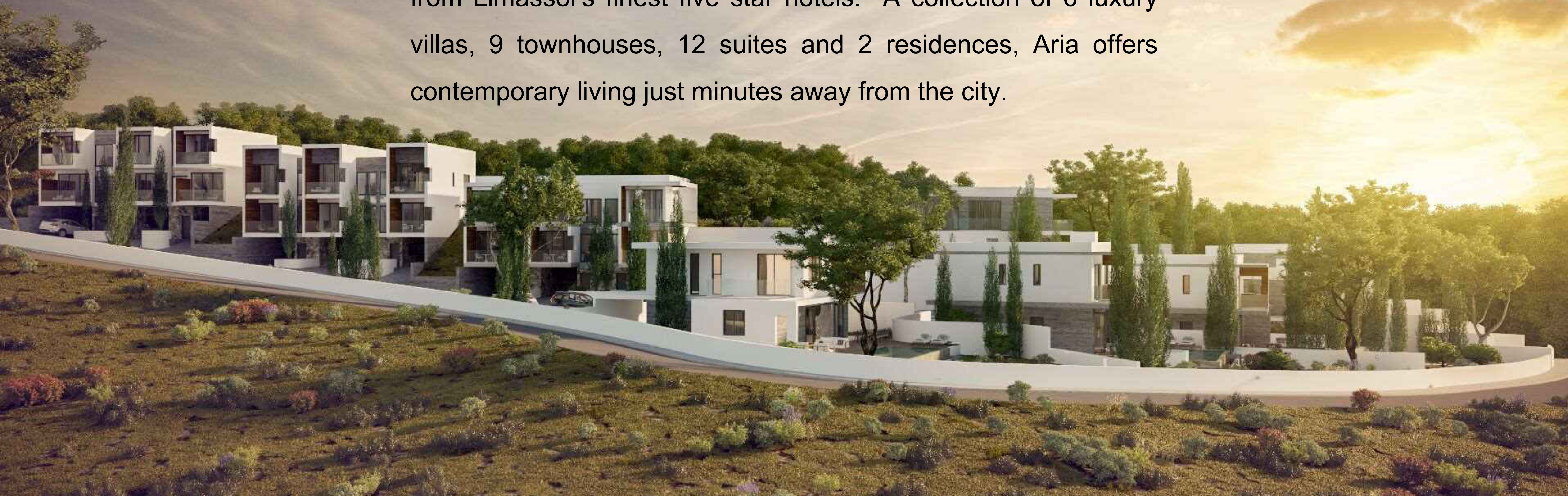


ALIVE WITH HISTORY

It has a charming medieval quarter, beautiful Byzantine castle and attractive Colonial era architecture.

ARIA RESIDENCES

Aria Residences enjoys a privileged location in one of the most desirable residential suburbs of Limassol, with spectacular views of the Limassol coastline and marina and just moments away from Limassol's finest five star hotels. A collection of 6 luxury villas, 9 townhouses, 12 suites and 2 residences, Aria offers contemporary living just minutes away from the city.







ARIA RESIDENCES

PLACES OF INTEREST

- 1. Limassol Castle
- 2. Limassol Marina
- 3. Old Port
- 4. Cathedral
- 5. City Hall
- 6. Saint Raphael Marina

-  5 star hotels
-  Private Schools
-  Supermarkets

Paphos Airport 65 km
Larnaca Airport 62 km

Amenities

AMENITIES NEAR ARIA RESIDENCES



Bakery 3.4 km



Supermarket 2km



Private English
School 11.4km



Private Hospital 9.9km



Pharmacy 4km



Petrol Station 4km



Athlesis Sporting
Centre 2.3km



Tavern 1km



CAFES & BARS

Just 1.5km away from a wide selection of chic cafes and beach bars.



SANDY BEACHES

A selection of sandy beaches are within 1.5km away.



MARINA

Just 3.7km away Saint Raphael Marina offers 237 berth marina with all amenities, accommodating boats up to 30m.

THE SITE





Location

Exclusive area in the hills of Ayios Tychonas, moments away from the city and coastline.

Views

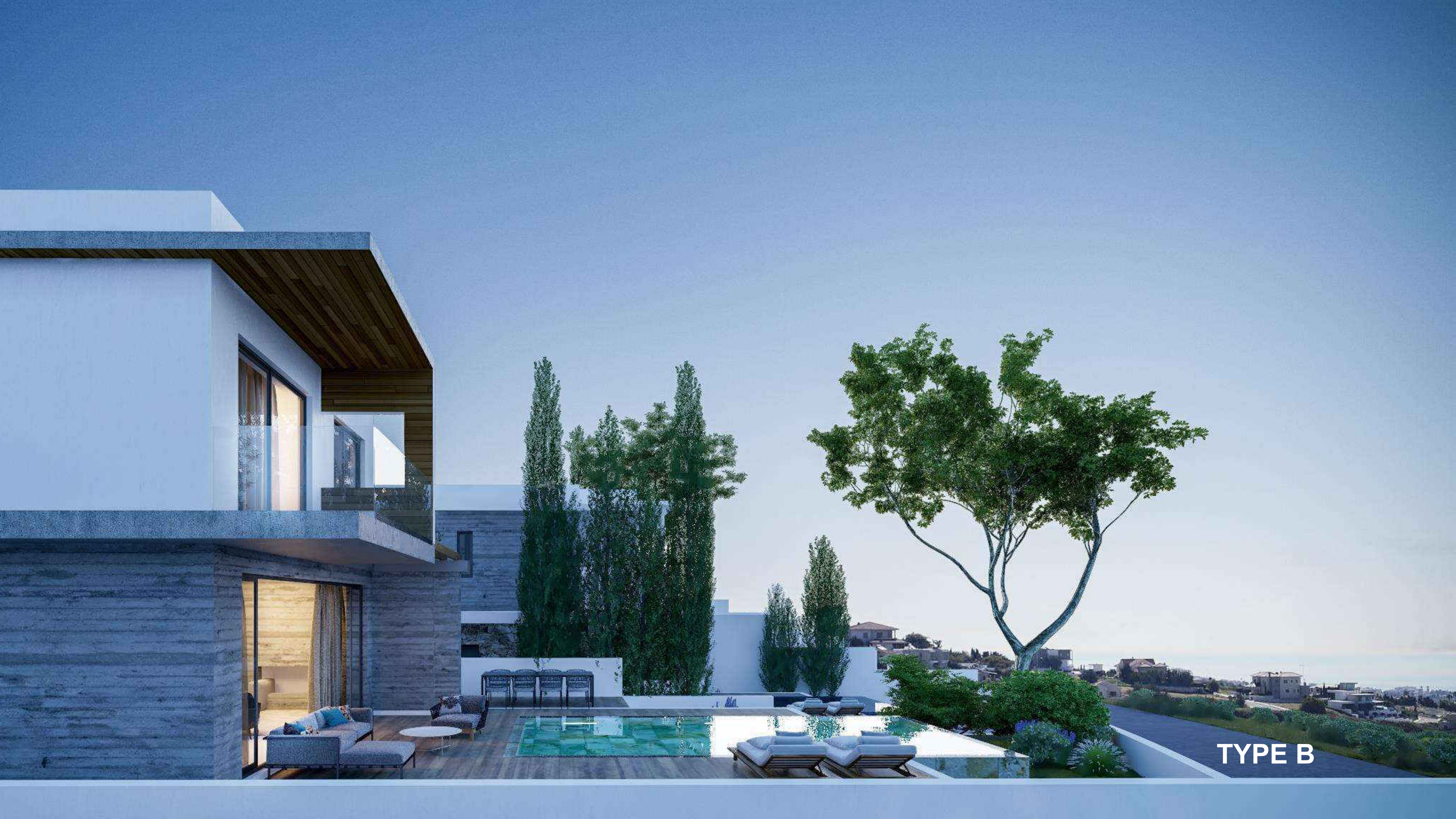
Spectacular views of the Mediterranean sea, marina, city and the rural surroundings.

Design

Contemporary architectural design with optimal natural light and luxurious materials borne out of the earth.

Aria Villas are set around private pools with stunning views to the sea, city and mountains. They respond to the confident tastes of discerning clients.





TYPE B

Stone, warm iroko hardwood, luxurious marbles; every home at Aria draws upon natural materials that have been borne out of the earth.



TYPE B



TYPE C



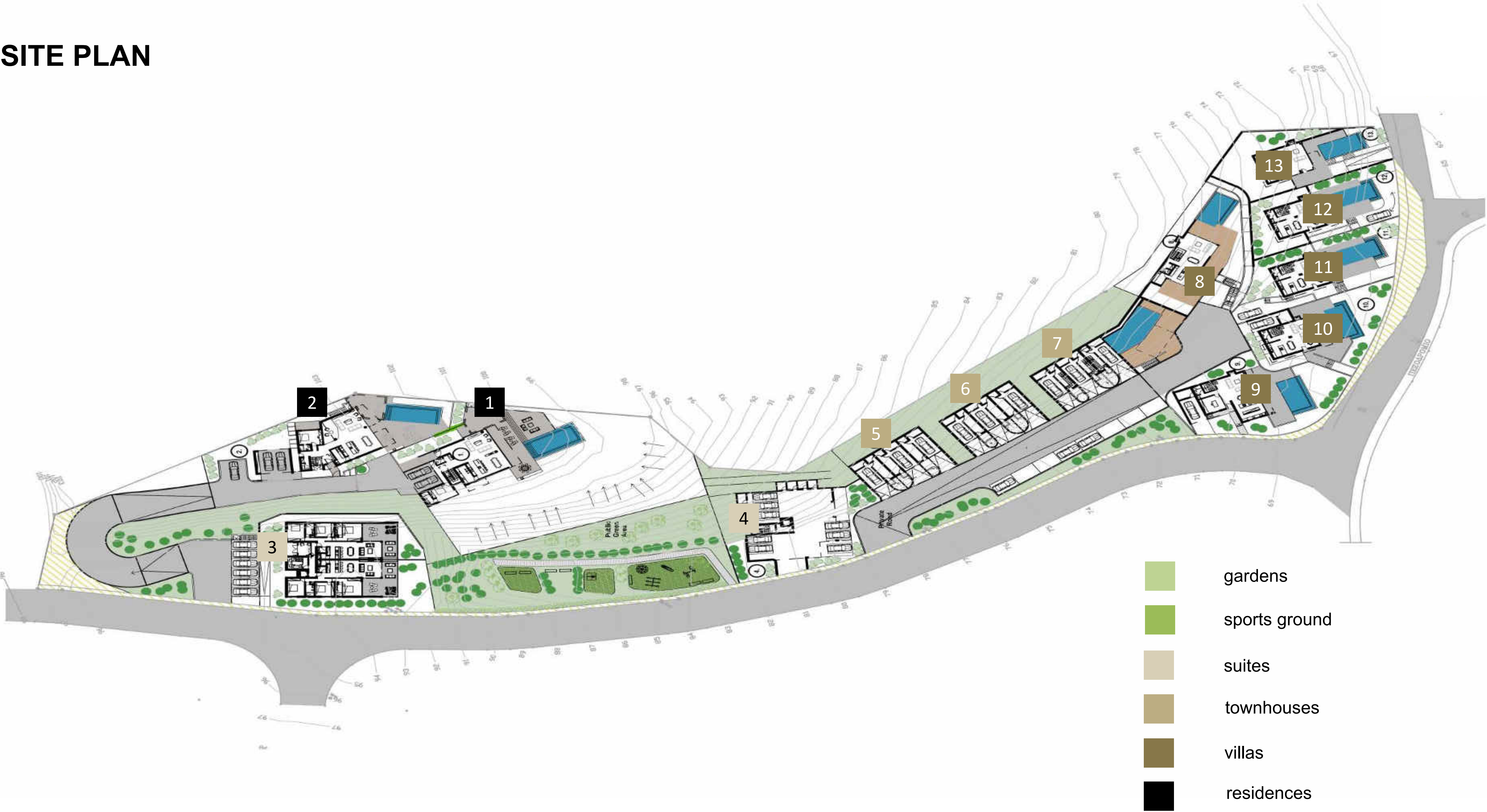








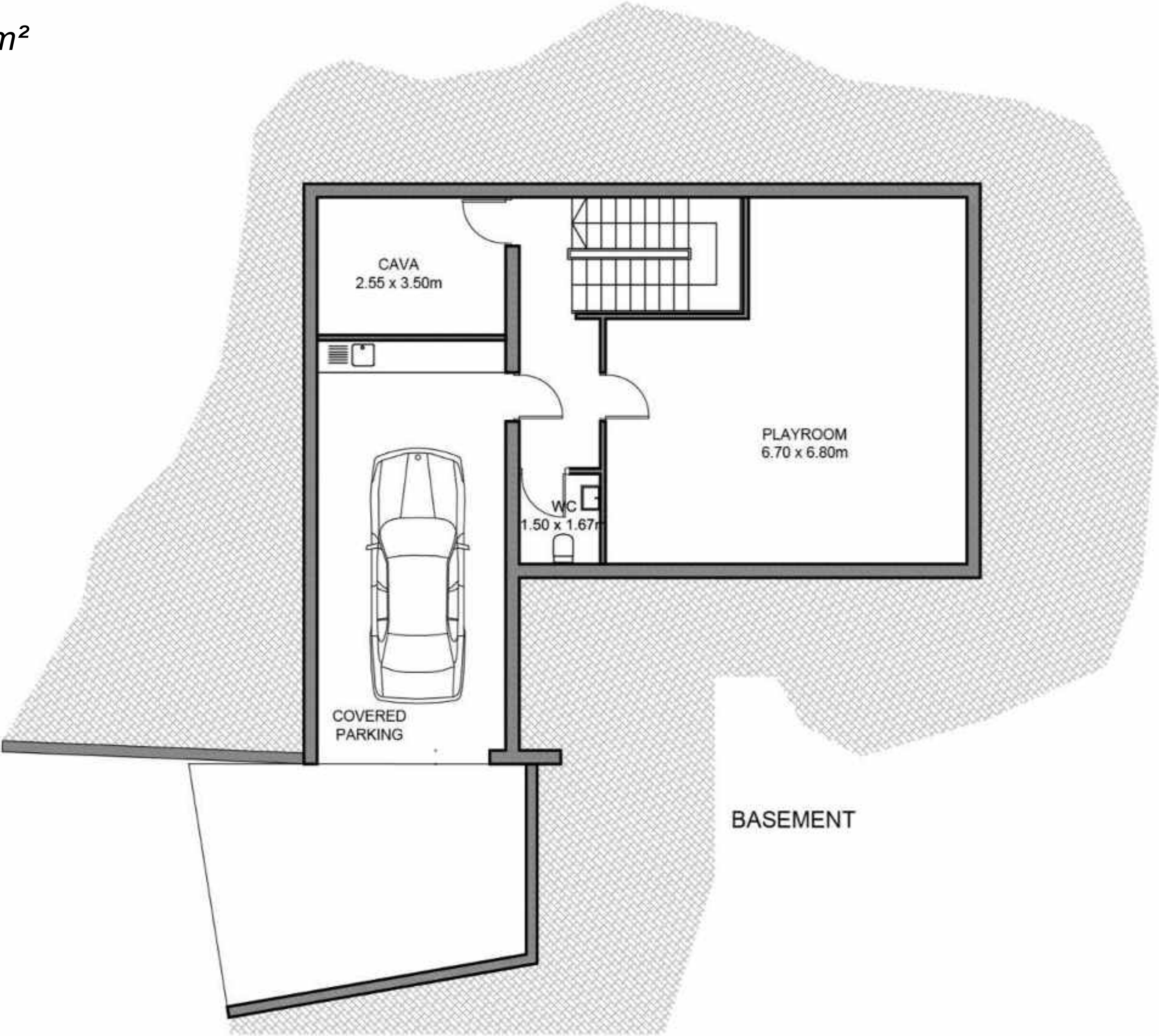
SITE PLAN

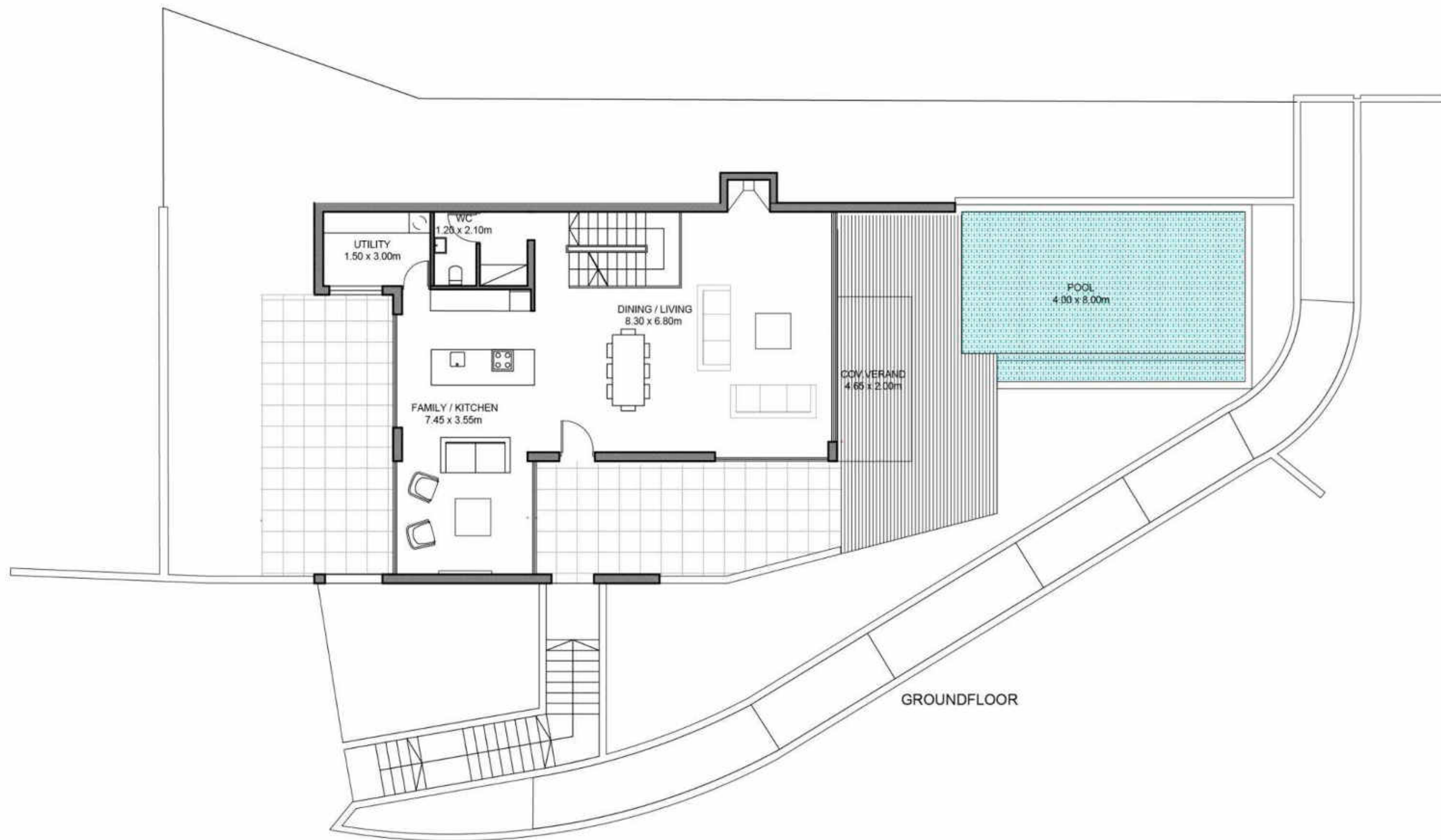


TYPE A

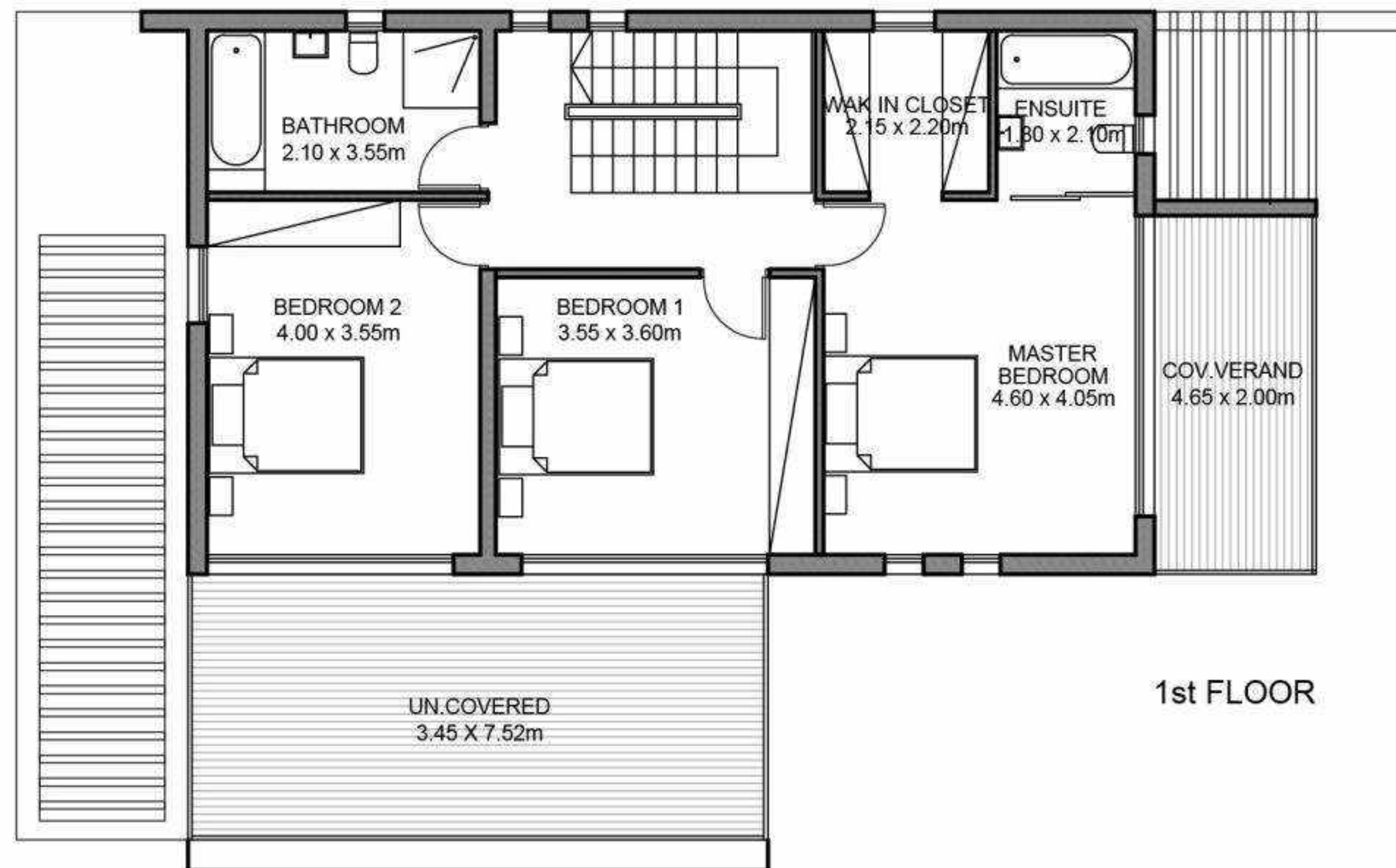
Villa 8

3 bedrooms, total cov. area 237 m²





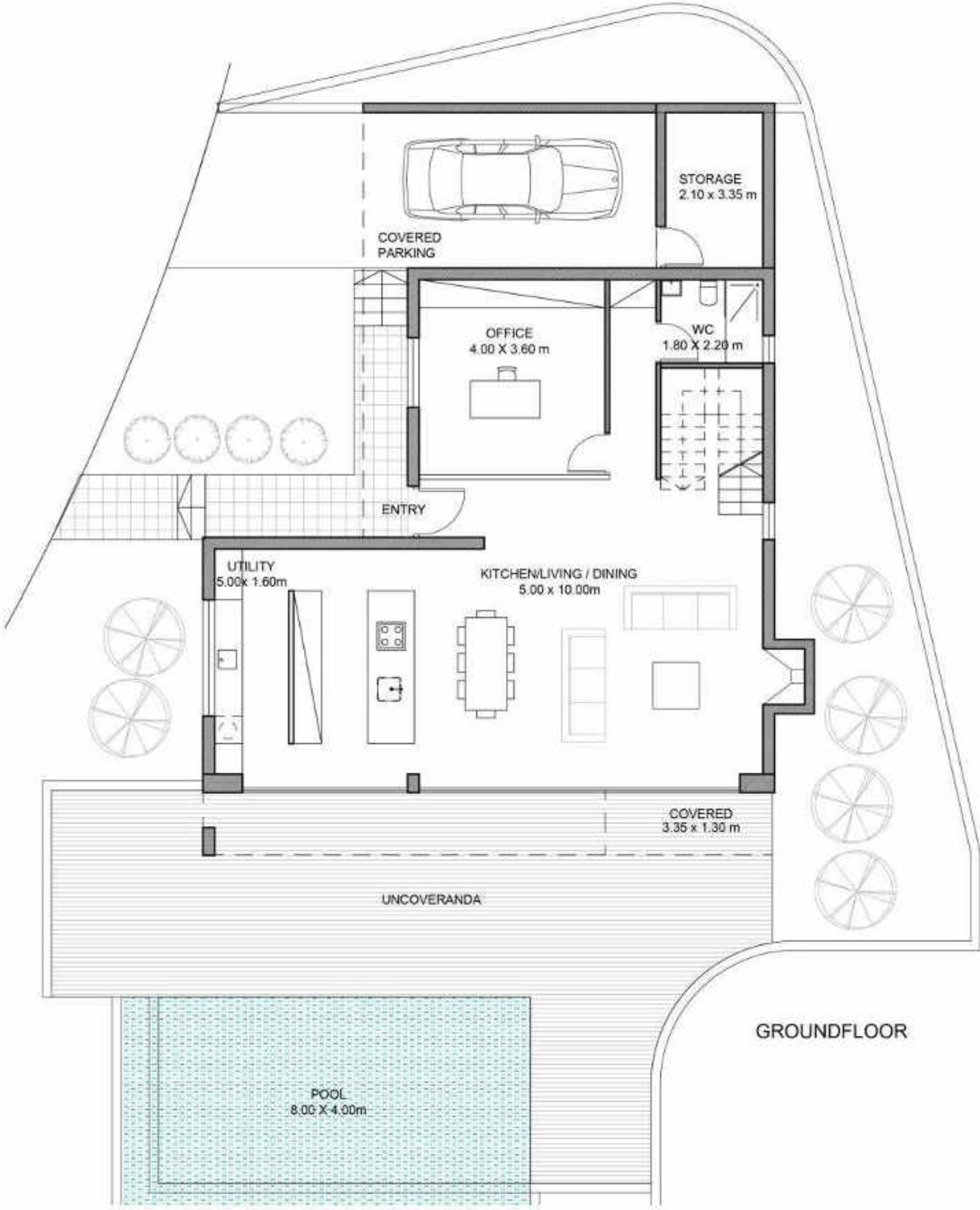
GROUND FLOOR

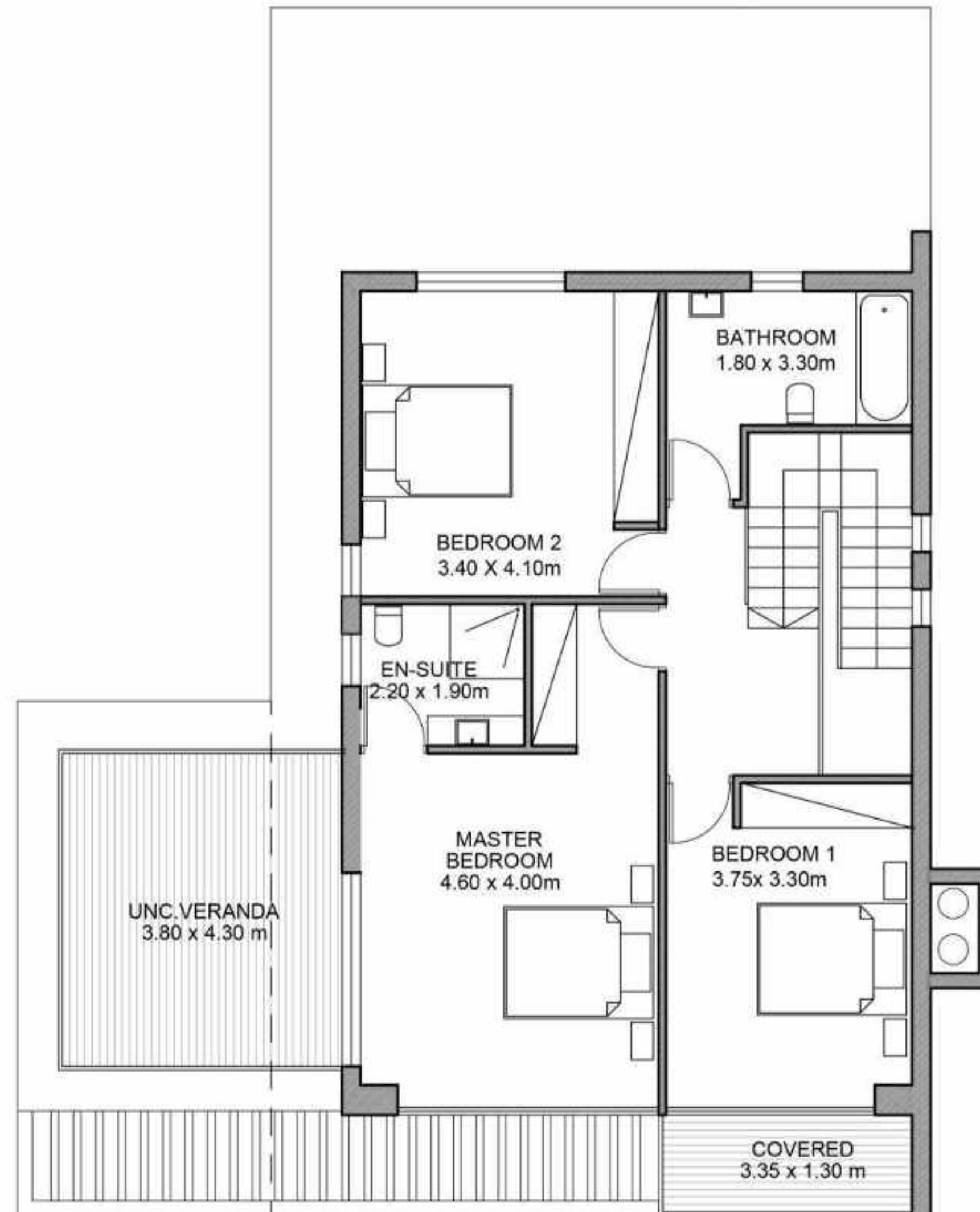


1st FLOOR

TYPE B

Villa 9
4 bedrooms, total cov. area 213 m²



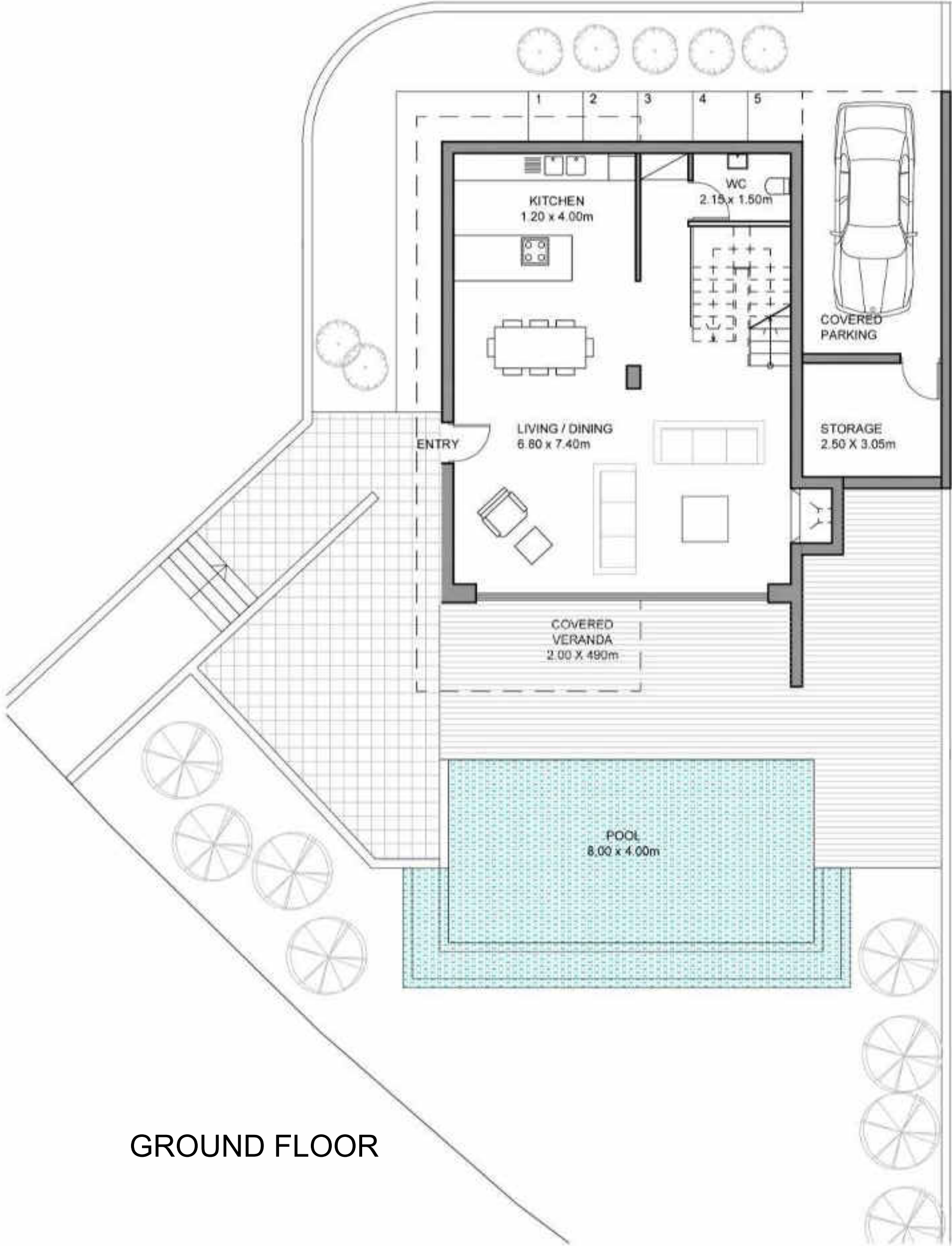


1st FLOOR

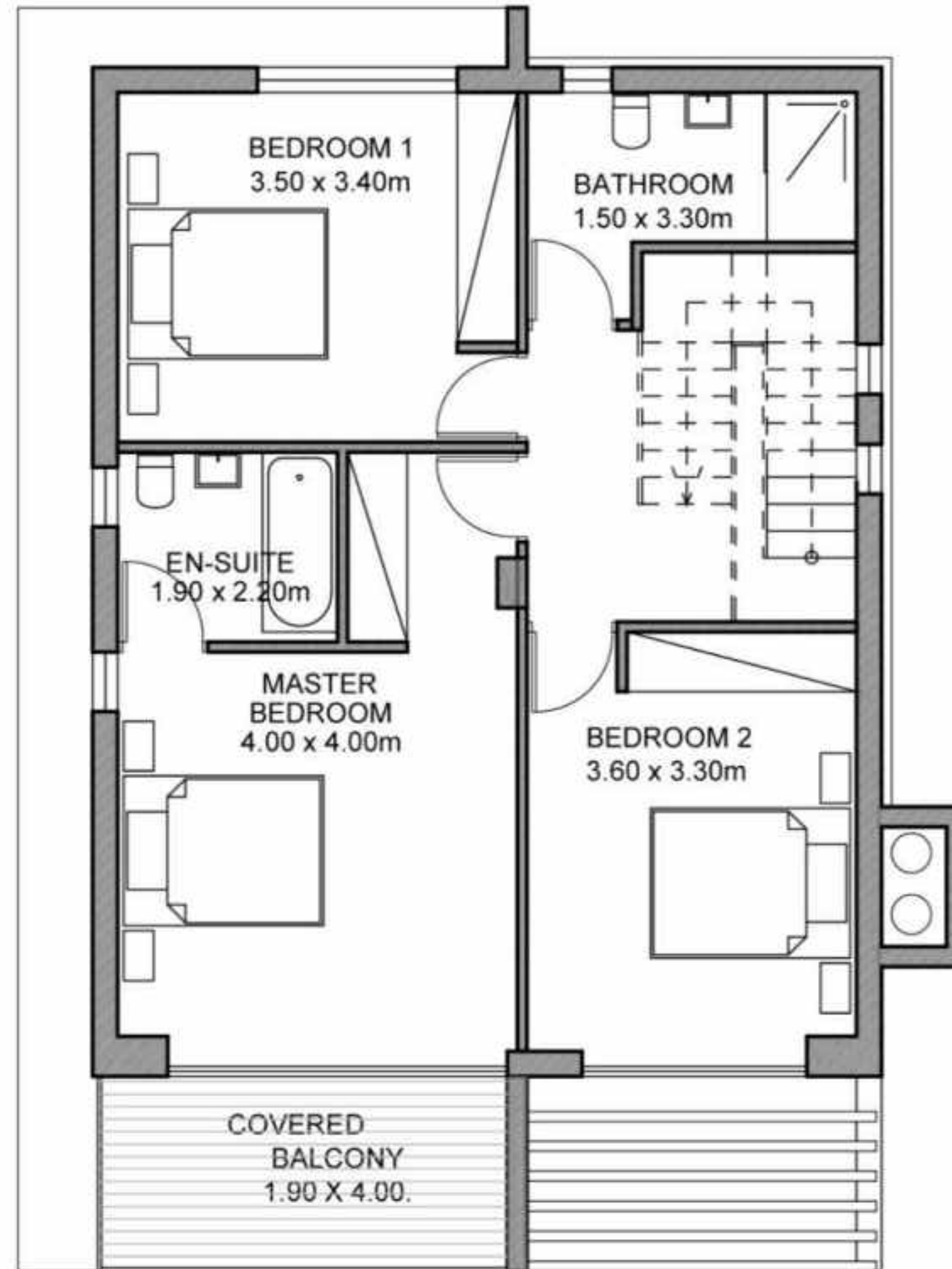
TYPE C

Villas 10, 11, 12, 13

3 bedrooms, total cov. area 178 m²



GROUND FLOOR

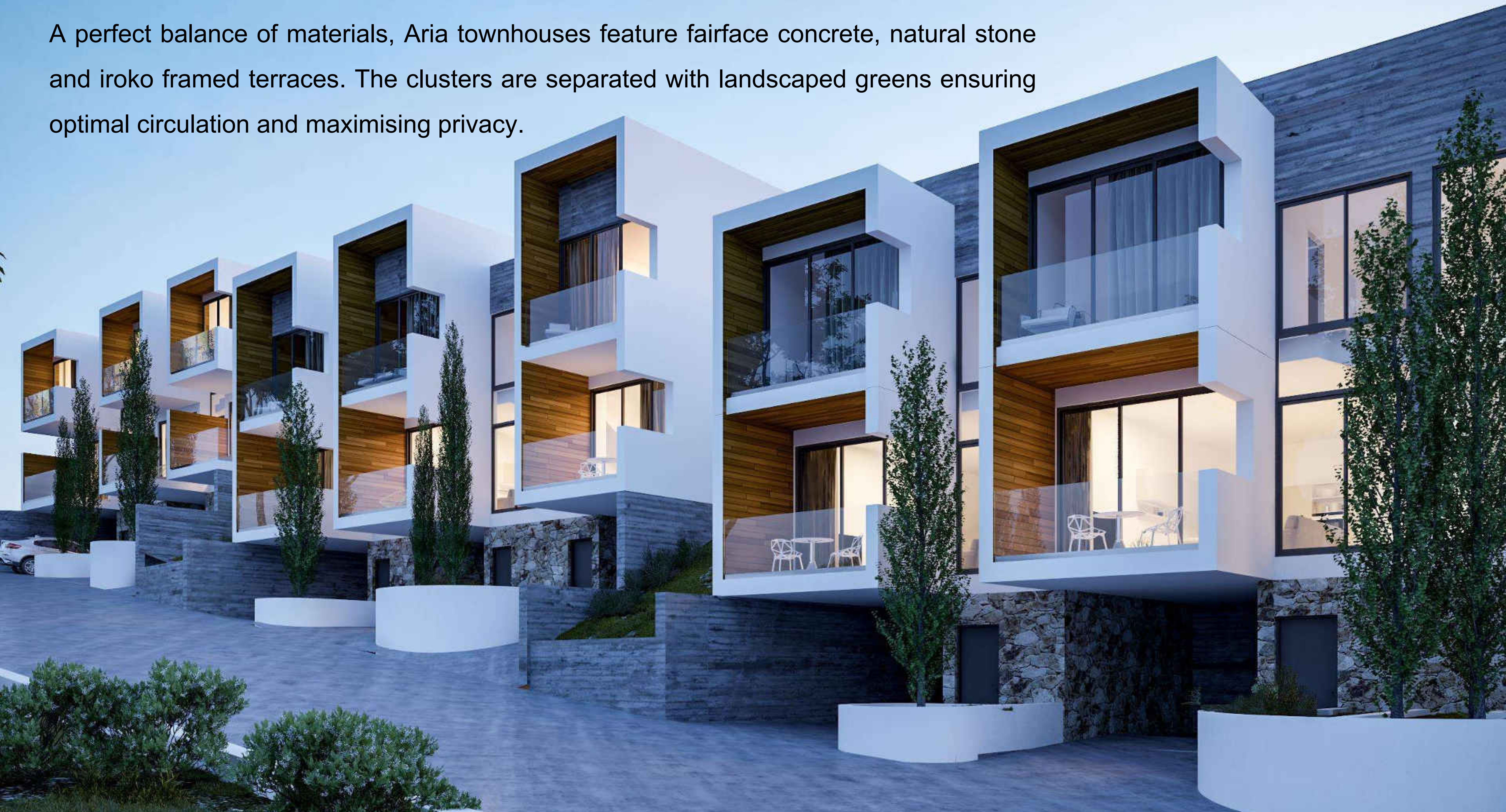


1st FLOOR

Arias' modern architectural lines are carried through to the townhouses with striking cantilever terraces and double-height glass stairwells being key features of the facades.



A perfect balance of materials, Aria townhouses feature fairface concrete, natural stone and iroko framed terraces. The clusters are separated with landscaped greens ensuring optimal circulation and maximising privacy.



TOWNHOUSES





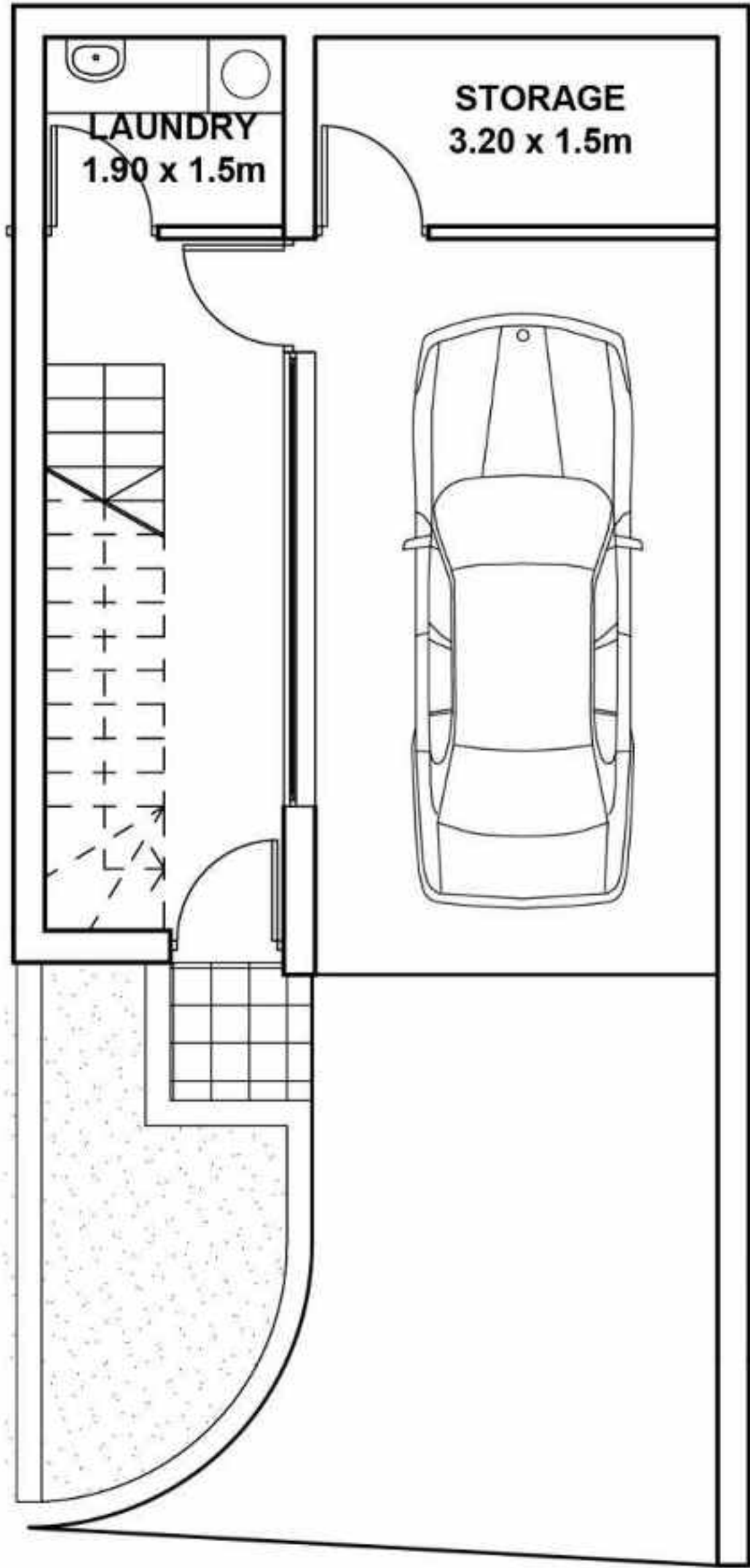




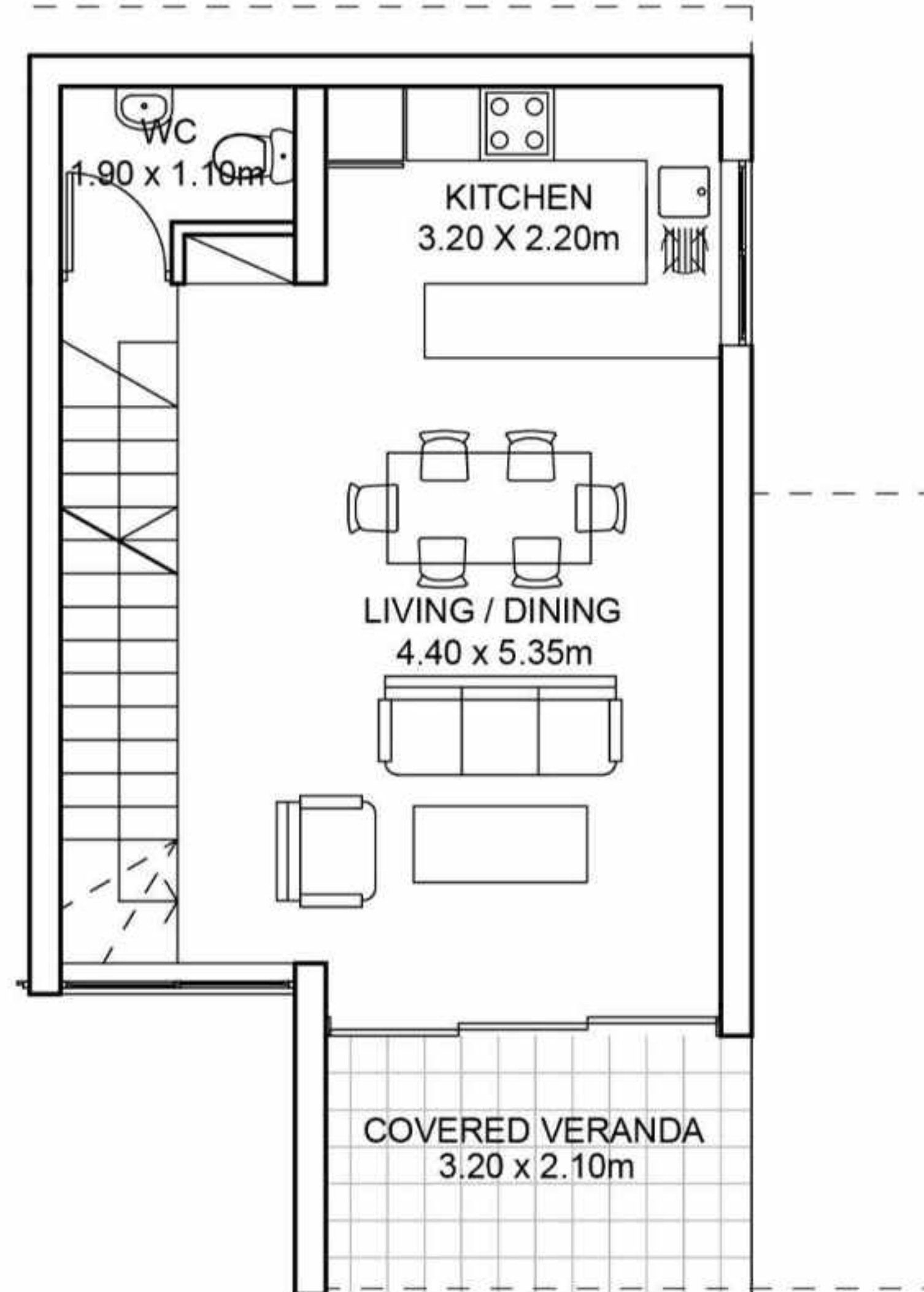


TOWNHOUSES

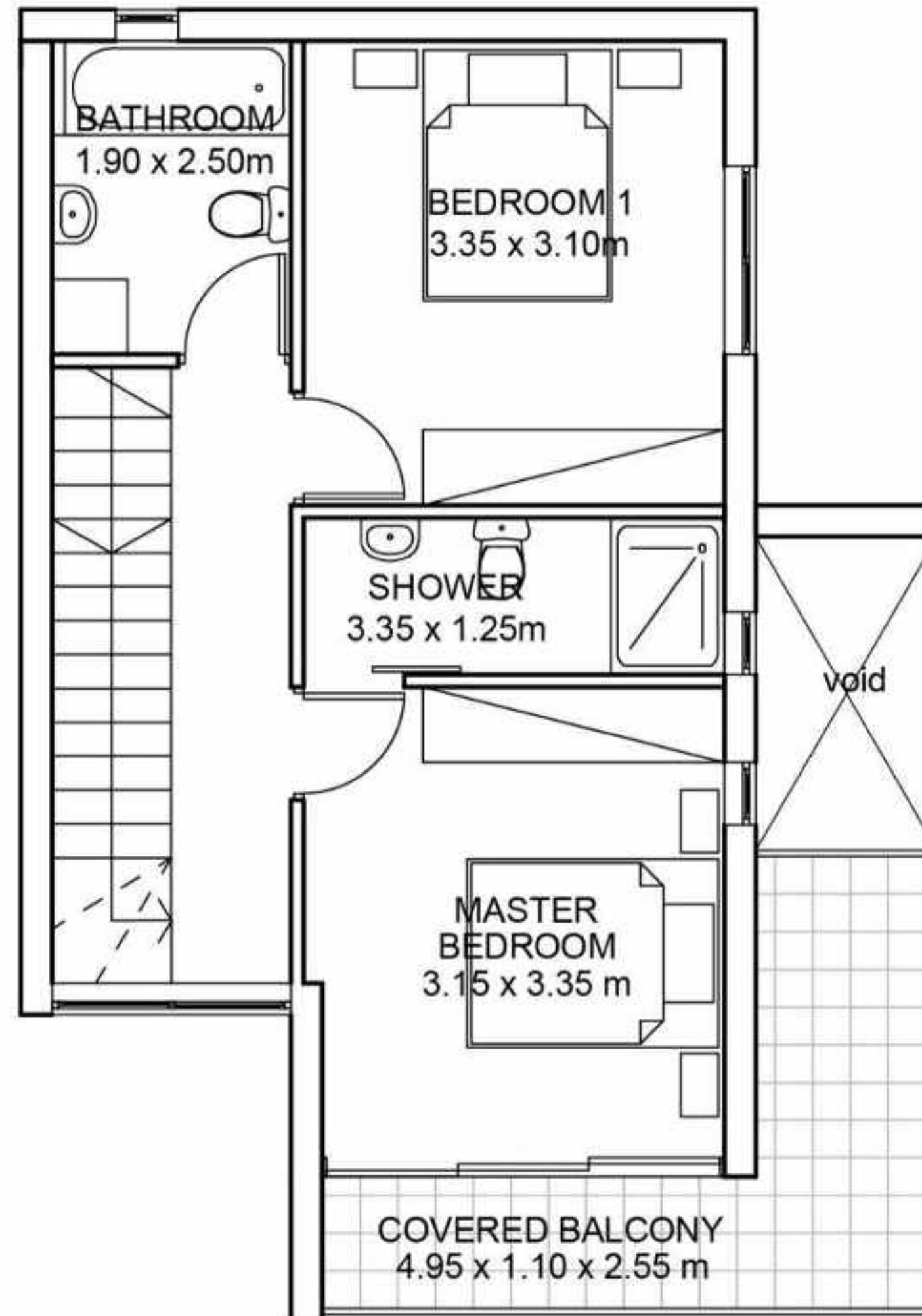
2 bedrooms, total cov. area from 105 – 112 m²



BASEMENT



GROUND FLOOR



1st FLOOR



INFINITY POOL

Surrounded by aromatic gardens
the residents pool offers the perfect place
to lounge and soak up the sun.

PLAYGROUND

A children's paradise with expansive
gardens and an adventure playground.



SPORTS GROUND

Residents can enjoy Arias' sports ground with
Its outdoor basketball court and other
Recreational facilities.



ARIA RESIDENCES

