




VISTA

LIMASSOL



An aerial photograph of Limassol, Cyprus, showing a wide promenade along the coast. The promenade is paved with light-colored tiles and lined with palm trees and modern streetlights. People are walking and jogging along the path. To the left is the blue sea with white waves crashing against a rocky breakwater. To the right is a dense urban area with multi-story apartment buildings, parking lots filled with cars, and green spaces with trees. The sky is clear and blue.

# LIMASSOL

## THE CITY OF CHOICE

Limassol is Cyprus' cosmopolitan capital, its most important business district and a vibrant modern playground. It is consistently ranked as one of the world's leading cities for quality of life.





Nowhere in Cyprus is there a richer mix  
of modern culture and fascinating  
heritage.





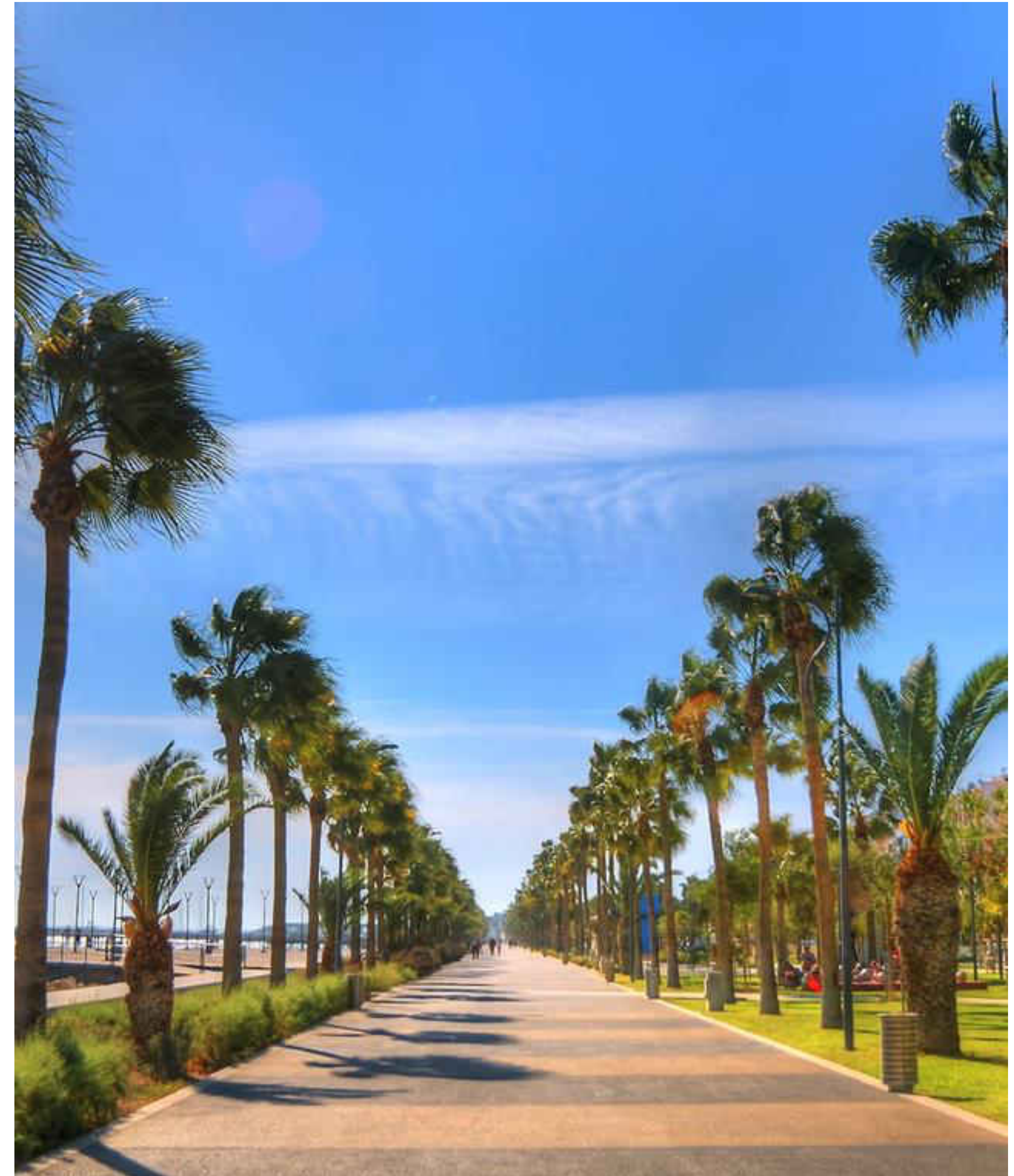
# Traditional Limassol

Away from the tourist areas, the Limassol countryside has a diverse wealth of its own with traditional villages, vineyards and wineries, monasteries, remote forests.



# Limassol Promenade

Limassol's enchanting promenade is situated on the prime seafront boulevard. It is the ideal place for walking, jogging, spending time on the beach or taking time for peaceful contemplation under the shade of a mature palm tree.







# Vibrant Limassol

The city offers an active, vibrant and varied choice of restaurants, stylish cafes, bars and chic lounges.



# An Adventure in Taste

Limassol's gastronomic scene comprises a delicious mix of fine and casual dining. It offers a great selection of cuisines as well as local traditional food.





# Private Schools

There are a number of private schools (Greek, English, French, and Russian) available in Limassol.







# Luxury Shopping

Limassol's shopping is refined. An abundance of global luxury brands serve the exquisite tastes of the town's stylish residents and visitors.





## ALIVE WITH HISTORY

It has a charming medieval quarter, beautiful Byzantine castle and attractive Colonial era architecture.



## LEISURE

A year-round programme of major international events.

Fine-art galleries, historic sites, museums and theatres.



## LIFESTYLE

Limassol is an important maritime centre, a popular cruise destination and a private yachting hub.



# V

## VISTA

LIMASSOL







## LUXURY TOWNHOUSES OVERLOOKING THE MEDITERRANEAN

Vista is located in a prominent hillside residential suburb of Limassol with beautiful coastal views. It provides an enchanting community combining modern elegance with Mediterranean design in a quiet neighbourhood, just minutes from the city. The development comprises twenty 2-bedroom townhouses, each with private roof garden, situated around a large residents pool and sun terrace. The contemporary homes, feature open plan layouts, airy interiors, and high quality materials and fixtures.



A desirable suburb within five minutes of the city.









PLACES OF INTEREST

- 1. Limassol Castle
- 2. Limassol Marina
- 3. Old Port
- 4. Cathedral
- 5. City Hall

-  Private Schools
-  Supermarkets

Paphos Airport 65 km  
Larnaca Airport 62 km



# Amenities

AMENITIES NEAR VISTA



Bakery 1 km



Supermarket 3.1 km



Private English  
School 8.7km



Private Hospital 9.9km



Pharmacy 4.0 km



Petrol Station 1.2 km



Athlesis Sporting  
Centre 350m



Tavern 1.6 km

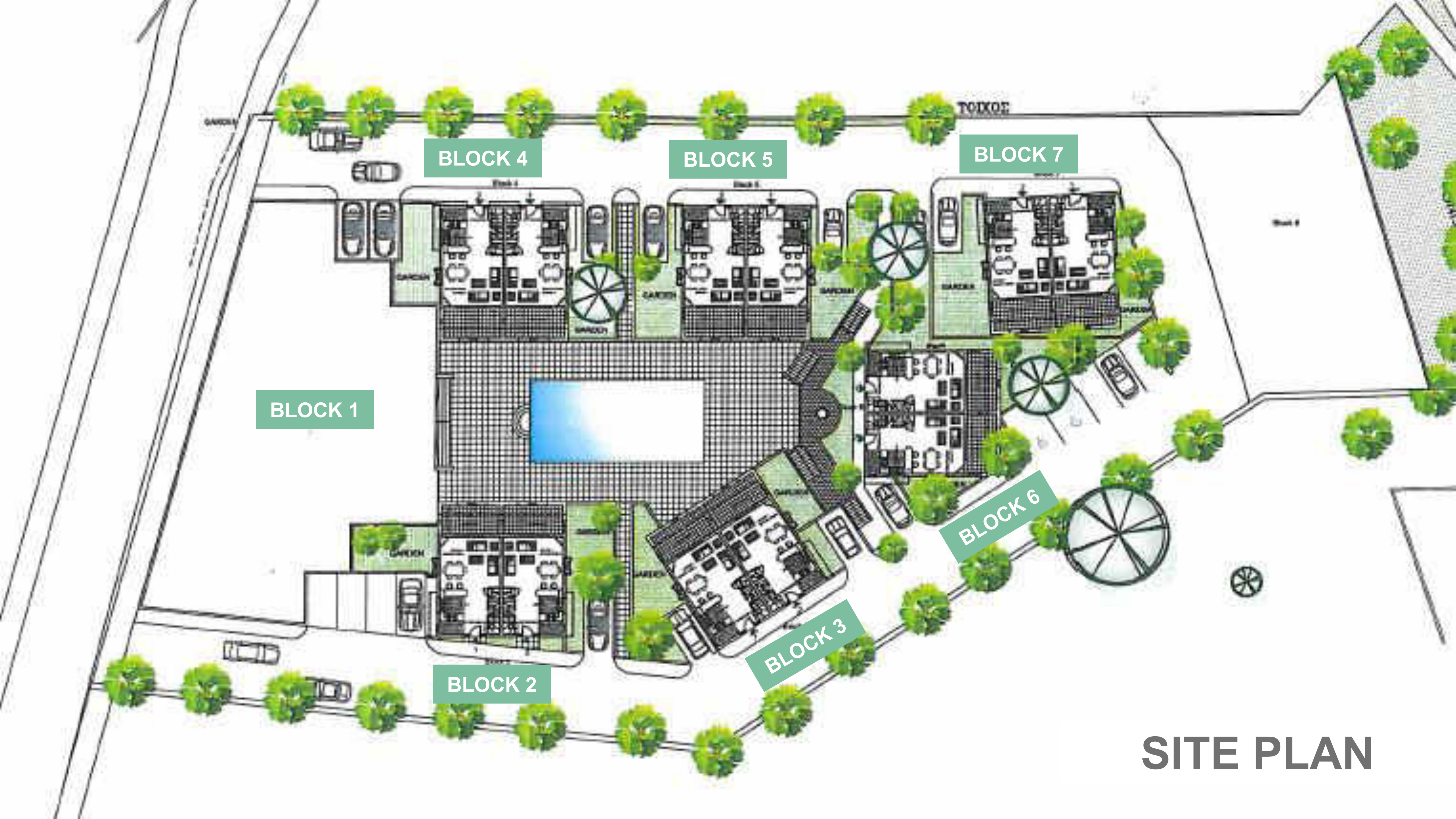


The image shows the Amathous Archaeological Site, featuring ancient stone ruins. A prominent stone wall with a semi-circular archway is visible in the background. In the foreground, there are several stone columns and a large pile of rubble. The site is surrounded by trees and vegetation.

# Amathous Archaeological Site

Situated near the vicinity of Agios Tychon, the ruins of one of the biggest ancient kingdoms of the island lay here: Amathus, which was also a royal city. It derived its name from Amathusa, the mother of King Kinyras from Paphos.

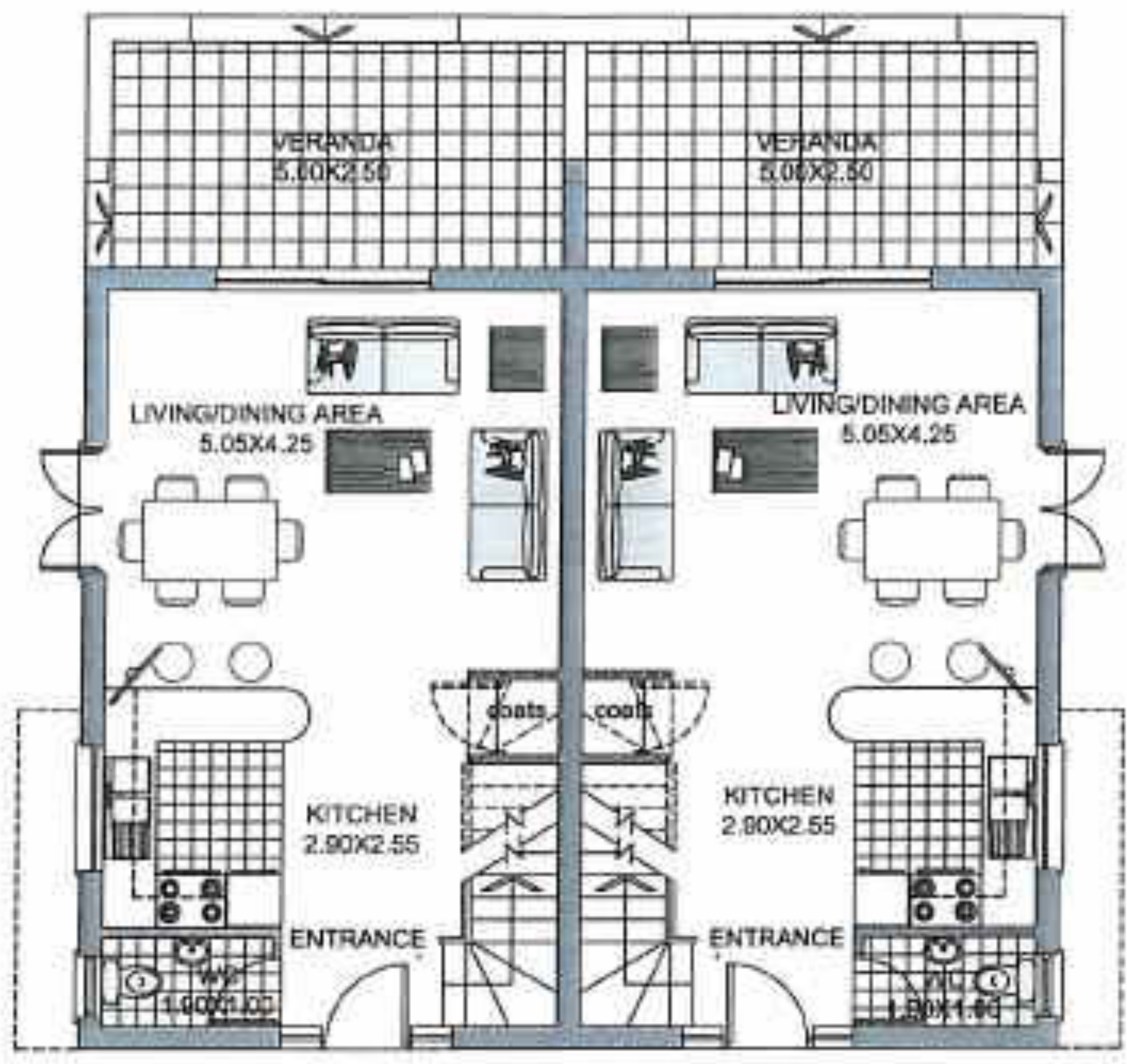




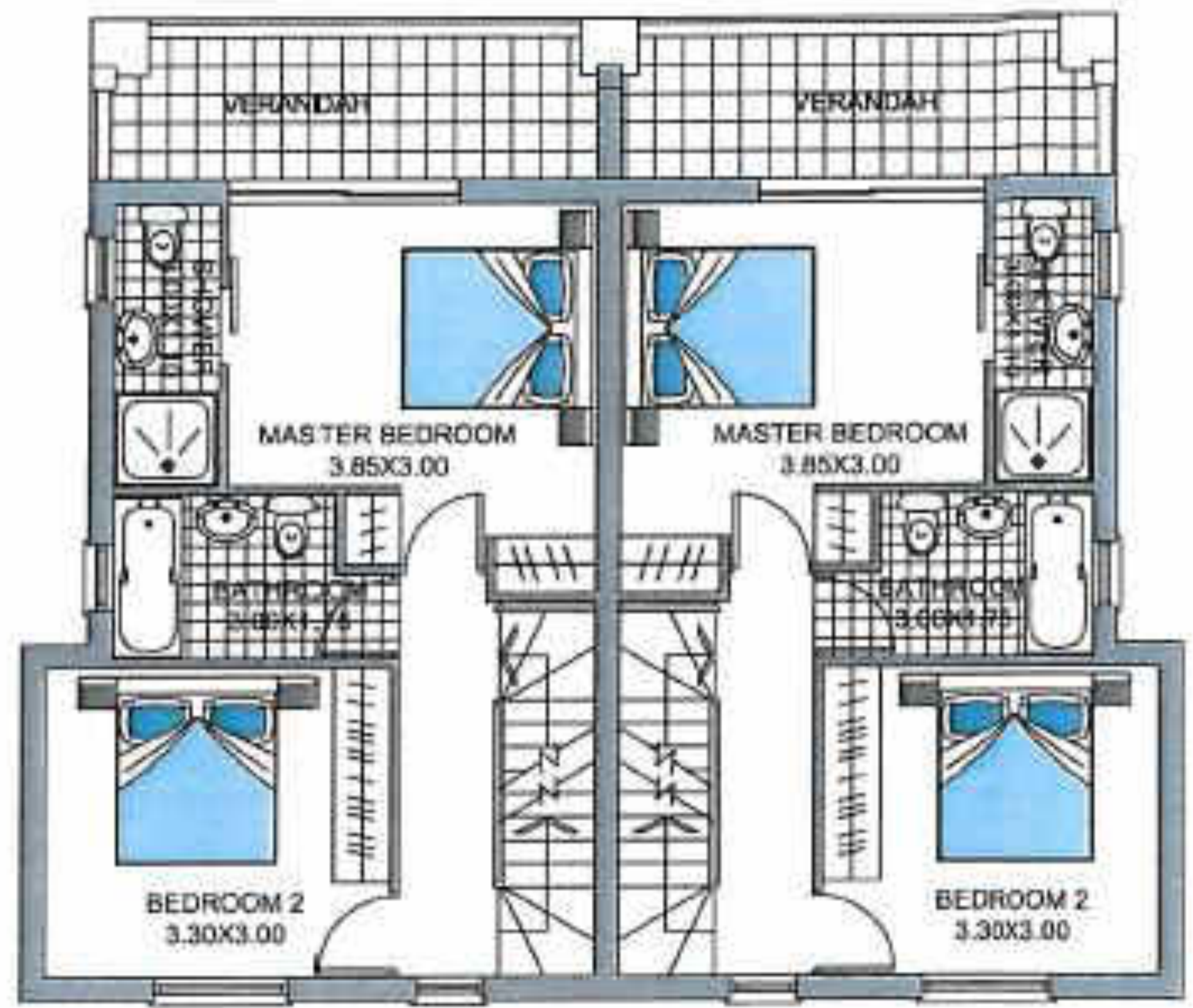
**SITE PLAN**



# GROUND & FIRST FLOOR PLANS



GROUND FLOOR



FIRST FLOOR





































VISTA  
LIMASSOL