



THE HERITAGE



A PROJECT BY **PRIME PROPERTY GROUP**

CREATED TO INDULGE
YOUR SENSES

600 METERS FROM
THE BEST SANDY
BEACH OF PAFOS
TOURIST AREA



DESCRIPTION

This stylish residential and commercial luxury building is designed to offer residents a refined urban living experience. Heritage is an elegant masterpiece that consists of 28 luxurious units: 1-, 2-, 3- bedroom apartments and 3 bedroom penthouses with its own roof terrace and private pools. The carefully designed master plan and high quality finishing materials, coupled with an outstanding design, will satisfy those who value true comfort and style. The residents will enjoy spacious layouts and ample facilities such as common swimming pool, gym and covered parking. Solid wood parquet floors, marble bathrooms, high-quality kitchens, built-in wardrobes and ceilings more than 3 meters, are only few of the many advantages this project offers making it ideal for your lifestyle and investment purposes.

MAJOR BENEFITS

- SEA VIEWS
- 600 METERS FROM THE BEST SANDY BEACH OF PAFOS TOURIST AREA
- CITY AMENITIES AROUND THE CORNER
- 2 MINUTES WALK FROM THE 5-STAR ELYSIUM HOTEL
- 5 MINUTES WALK TO THE KINGS AVENUE MALL
- GATED COMPOUND WITH COMMON SWIMMING POOL, GYM AND COVERED PARKING
- SPACIOUS LAYOUTS
- HIGH STANDARD FINISHES
- UNDER FLOOR HEATING AND CENTRAL AIR CONDITIONING
- HIGH CEILINGS
- TOP STANDARD FINISHES
- PENTHOUSES WITH PRIVATE ROOF GARDENS AND POOLS



INTRODUCTION

Paphos is a city on the southwest coast of the Mediterranean island of Cyprus. Inhabited since Neolithic times, it has several sites relating to the cult of goddess Aphrodite, whose mythical birthplace was at Old Paphos (Kouklia). New Paphos is the modern city that incorporates the harbor, and the ancient ruins of tombs, fortresses, theaters and villas at Paphos Archaeological Park.



LOCATION

The Arts and cultural district is a burgeoning urban residential neighborhood only moments away from the sea connecting fine culinary and entertainment. The inspiration behind Heritage is to create an environment that combines the core elements of a true luxury urban lifestyle with the energy, culture and vibe of Paphos's exhilarating Arts and Entertainment District, an area recognized as the most enjoyable region of Cyprus.





LUXURY FINISHES:

PARQUET FLOORS IN LIVING AREAS & BEDROOMS,
MARBLE FLOORS & WALLS IN BATHROOMS,
KITCHEN CABINETS FROM KNOWN BRANDS,
DOUBLE GLAZED WINDOWS WITH ALUMINUM FRAMES,
FIRST CLASS SANITARY WARE



2 MINUTES WALK FROM
THE 5-STAR ELYSIUM HOTEL

CHOICE OF PROPERTIES

BLOCK A

Floor	Property	Type	Bedrooms	Bathrooms	Indoor area sq.m.	Covered veranda sq.m.	Uncovered veranda sq.m.	Roof terrace sq.m.	Total area sq.m.
1st	101	APARTMENT	3	2	107.00	29.00			136
	102	APARTMENT	1	1	58.00	19.00			77
2nd	201	APARTMENT	3	2	107.00	29.00			136
	202	APARTMENT	1	1	58.00	19.00			77
3rd	301	PENTHOUSE	3	2	107.00	30.00	9.40	113.00	260
	302	APARTMENT	1	1	58.00	17.00			75

BLOCK B

Floor	Property	Type	Bedrooms	Bathrooms	Indoor area sq.m.	Covered veranda sq.m.	Uncovered veranda sq.m.	Roof terrace sq.m.	Total area sq.m.
1st	101	APARTMENT	2	2	88.00	19.00			107
	102	APARTMENT	1	1	63.00	16.00			79
	103	APARTMENT	2	2	85.00	32.00			117
	104	APARTMENT	2	2	85.00	28.00			113
	105	APARTMENT	2	2	85.00	14.00			104
2nd	201	APARTMENT	2	2	88.00	19.00			107
	202	APARTMENT	1	1	63.00	16.00			79
	201	APARTMENT	2	2	85.00	32.00			117
	202	APARTMENT	2	2	85.00	28.00			113
	201	APARTMENT	2	2	85.00	14.00			104
3rd	301	PENTHOUSE	2	2	87.00	20.00		95.00	202
	302	APARTMENT	1	1	63.00	16.00			79
	303	PENTHOUSE	2	2	85.00	21.00	11.00	85.00	202
	304	PENTHOUSE	3	3	122.00	38.00	51.50	73.00	285

BLOCK C

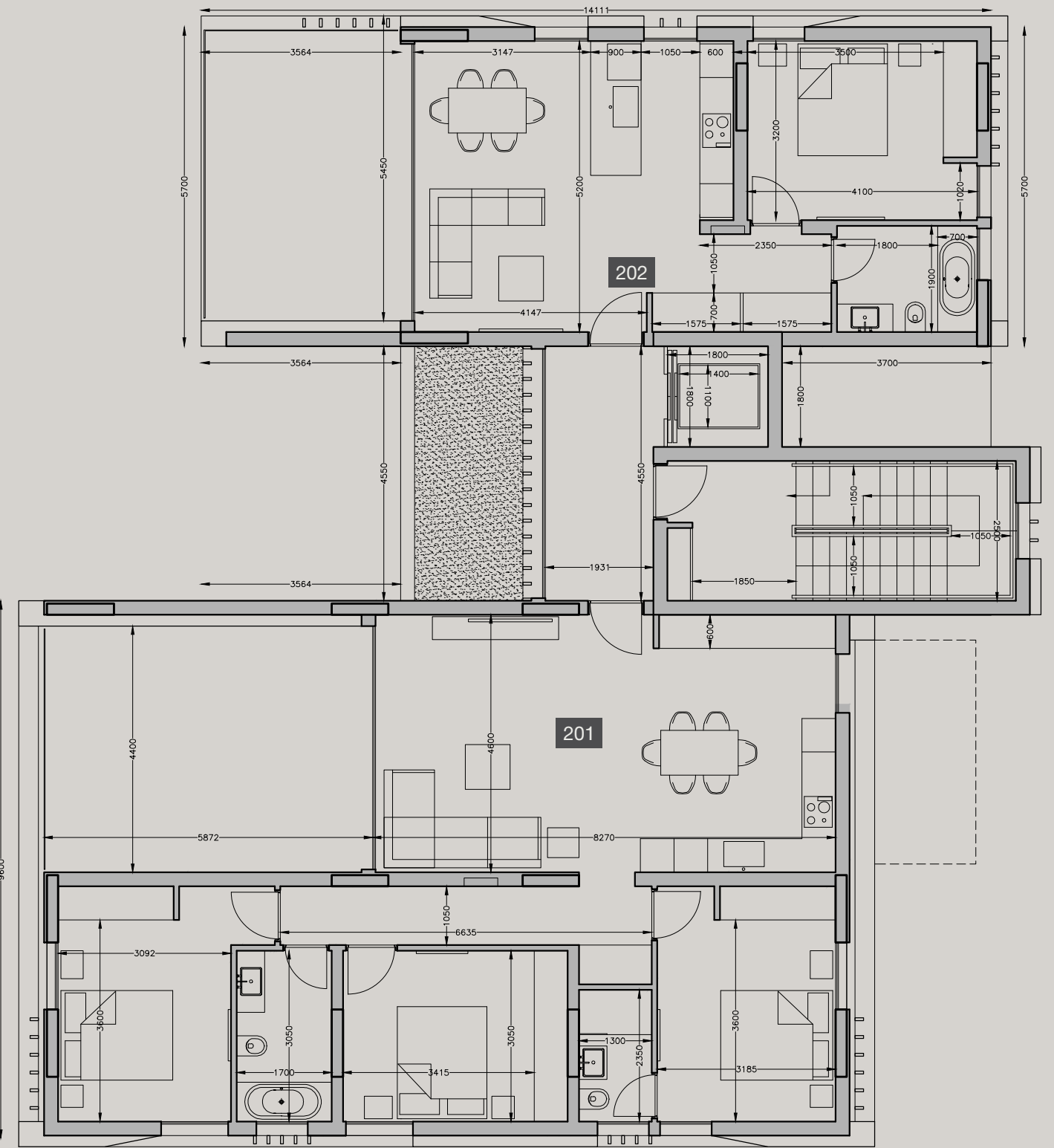
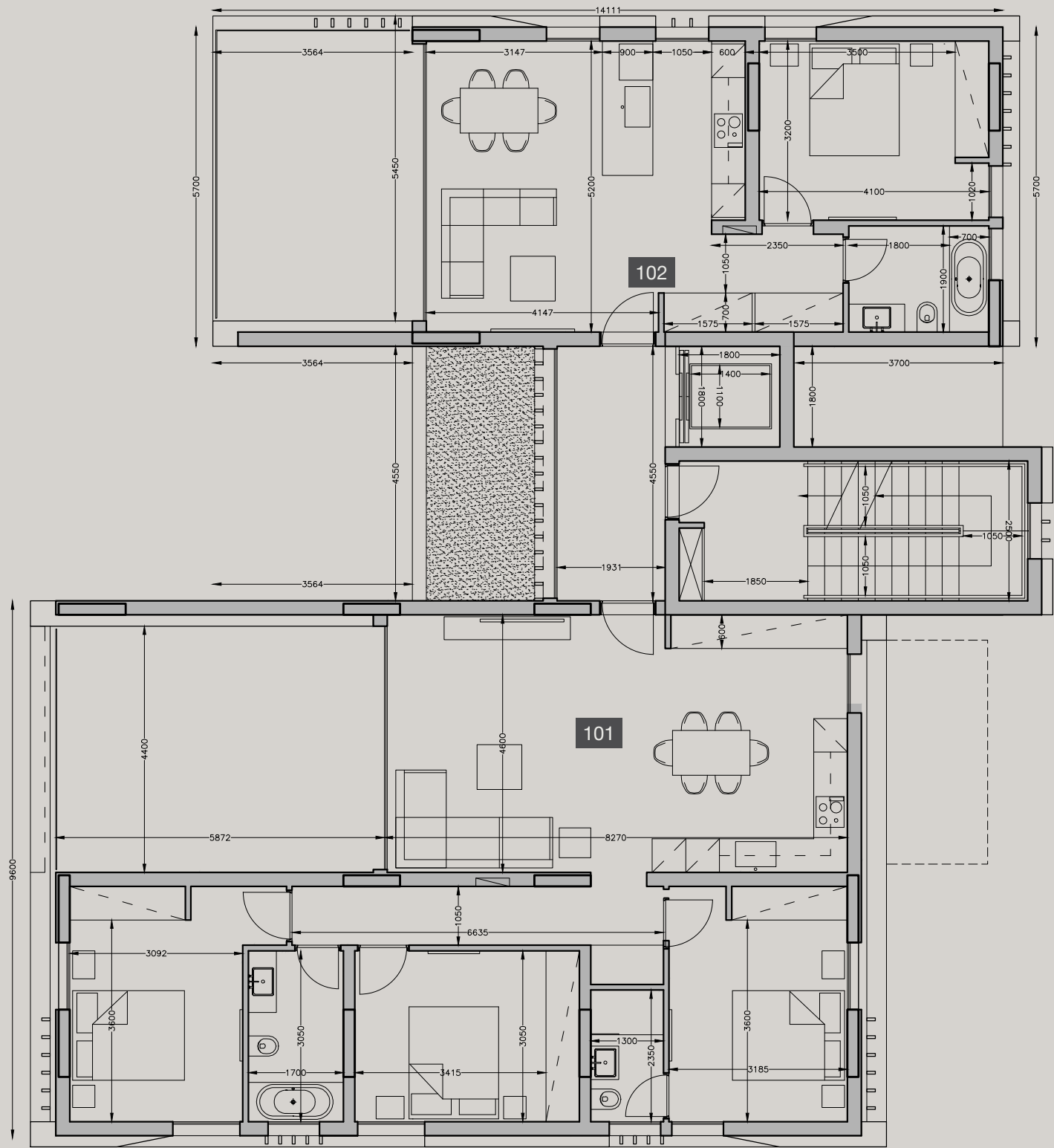
Floor	Property	Type	Bedrooms	Bathrooms	Indoor area sq.m.	Covered veranda sq.m.	Uncovered veranda sq.m.	Roof terrace sq.m.	Total area sq.m.
1st	101	APARTMENT	2	2	88.70	44.80			133
	102	APARTMENT	2	2	86.30	16.00			102
	103	APARTMENT	2	2	85.00	13.50			98
	104	APARTMENT	3	3	122.30	30.60			153
2nd	201	APARTMENT	2	2	88.70	44.80			133
	202	APARTMENT	2	2	86.30	16.00			102
	201	APARTMENT	2	2	85.00	13.50			98
	202	APARTMENT	3	3	122.30	30.60			153
3rd	301	PENTHOUSE	3	4	128.30	27.50		85.00	241
	302	PENTHOUSE	3	4	122.90	42.70	36.10	81.00	283
	303	PENTHOUSE	3	4	127.90	30.80		70.00	229

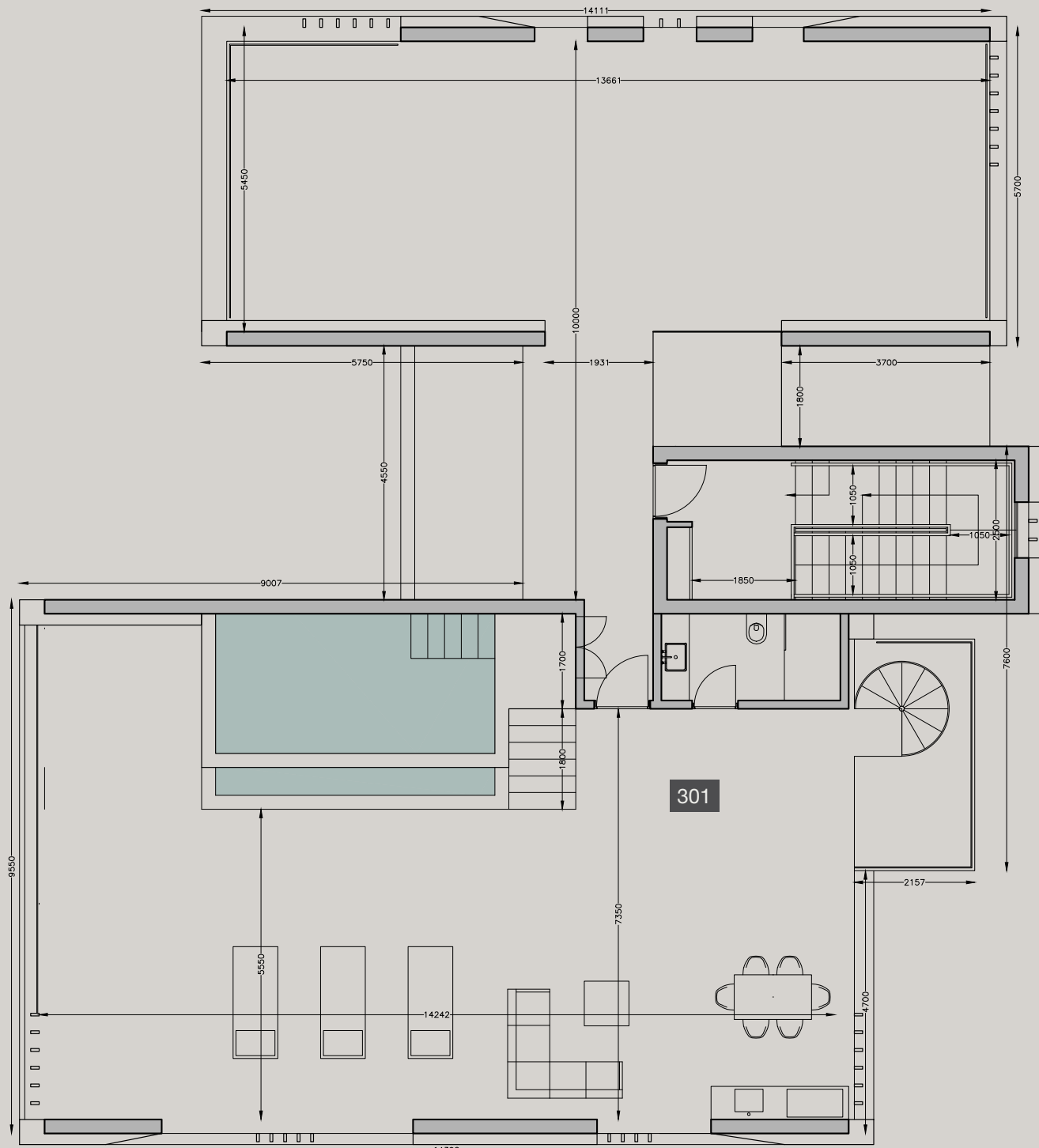
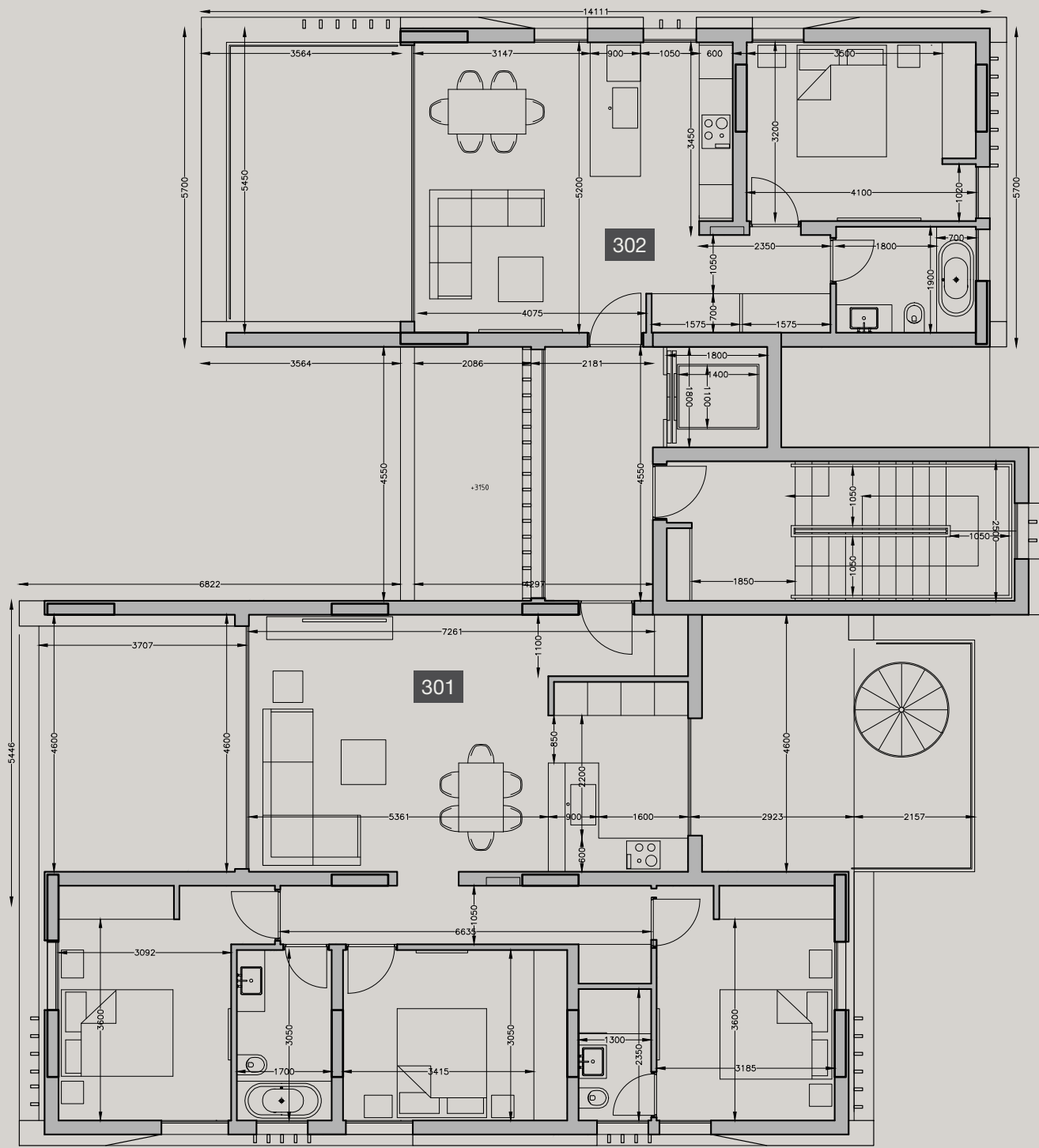
NOTE: the areas stated above may slightly differ upon issuance of relevant authority permits

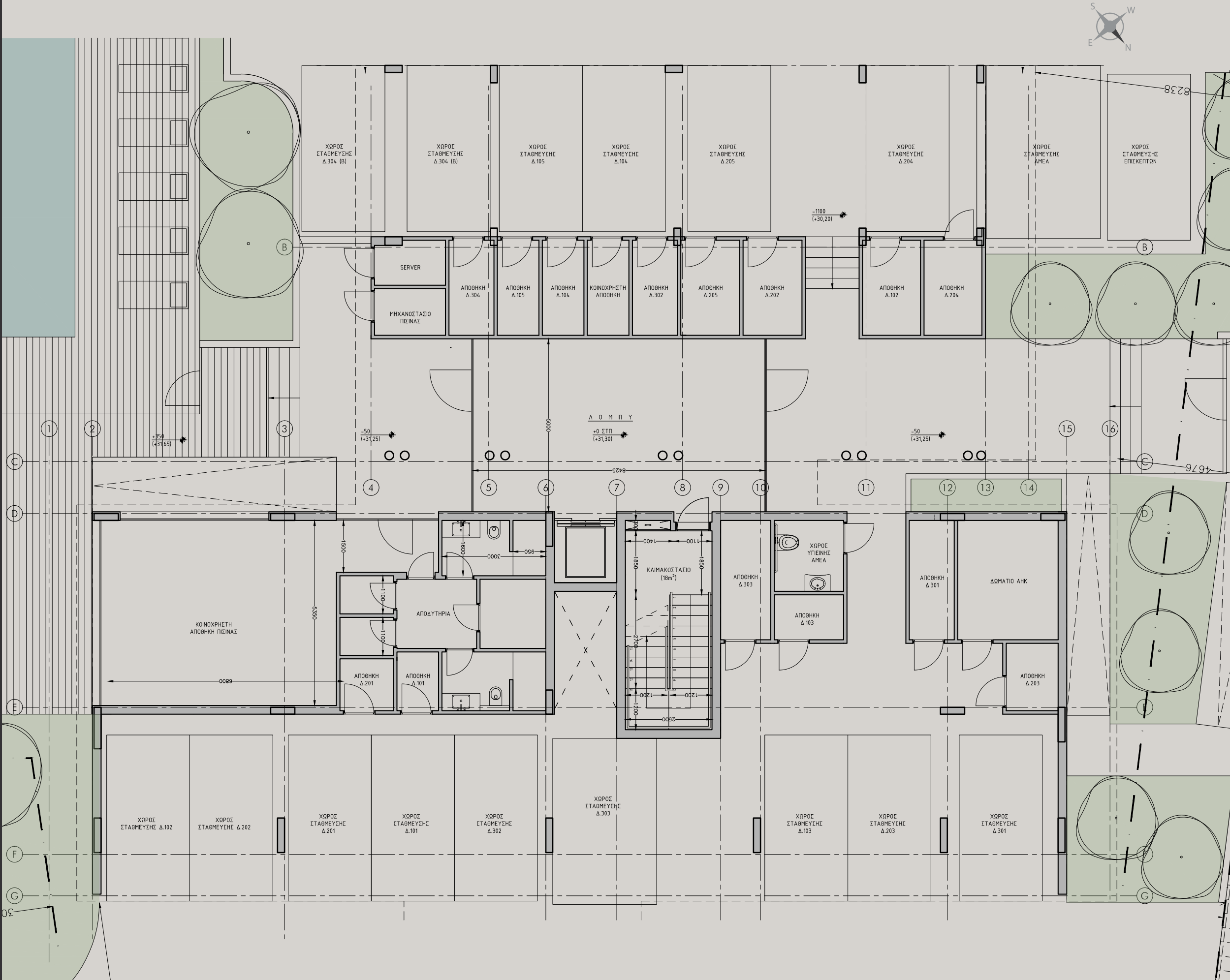


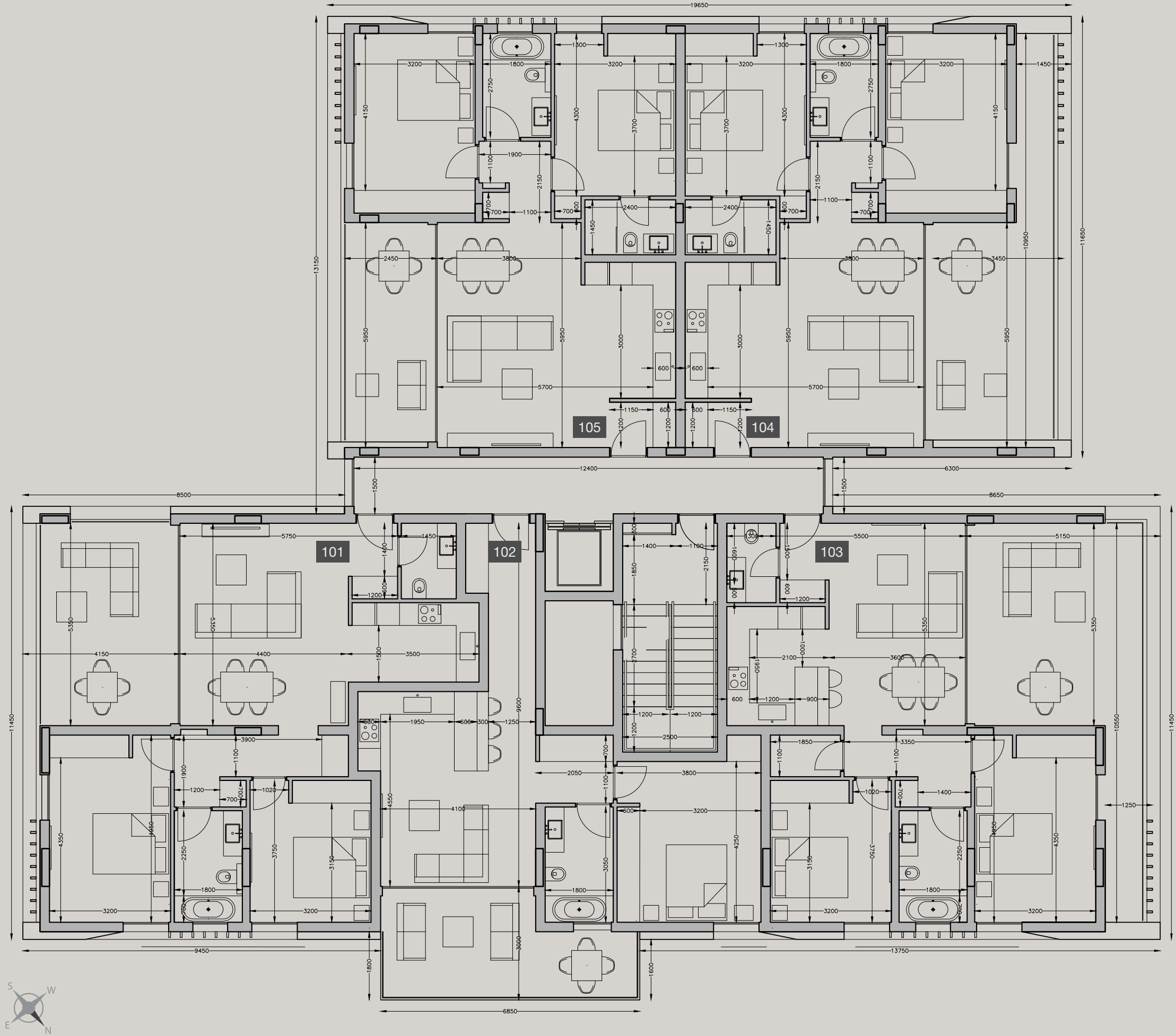


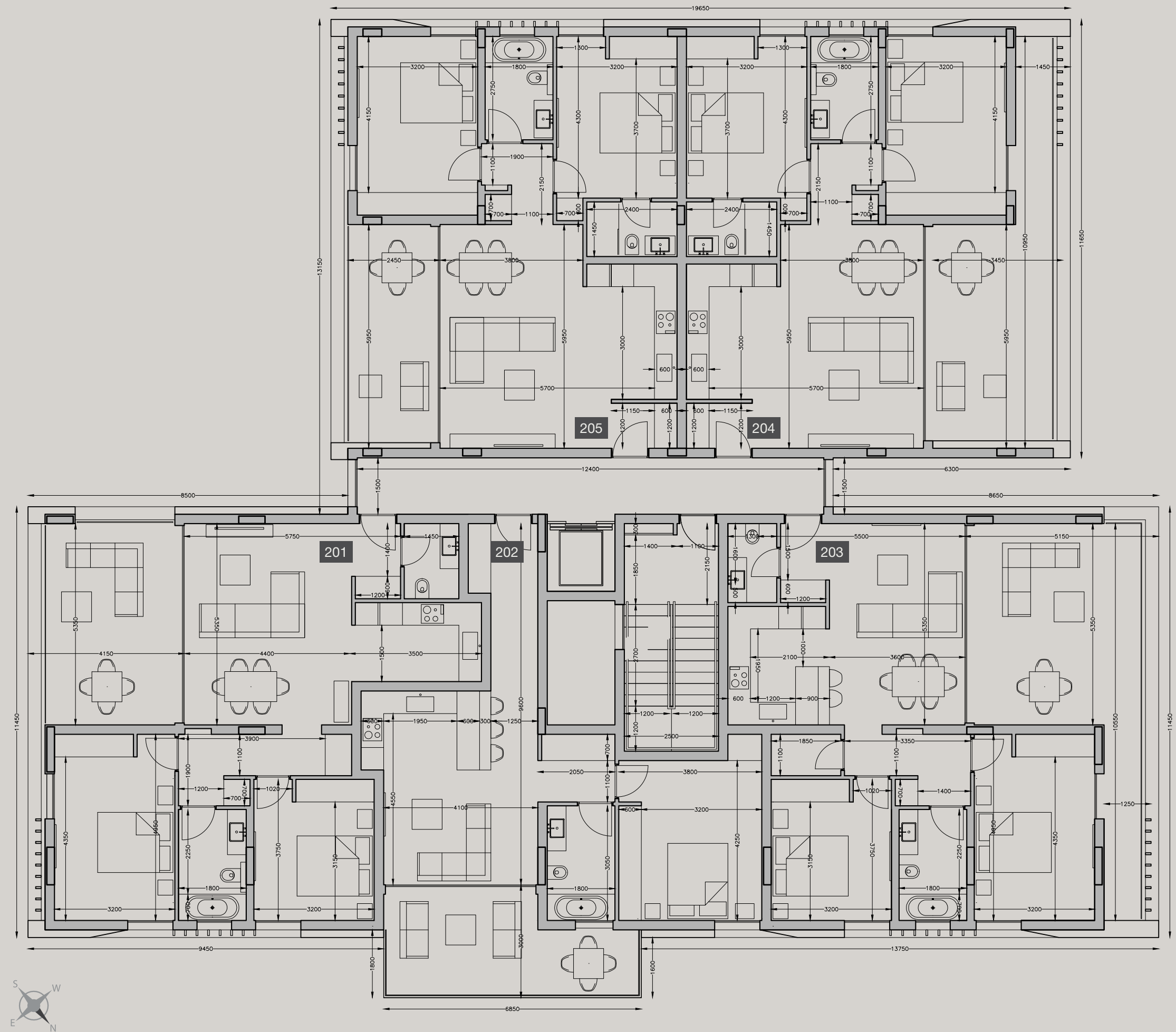


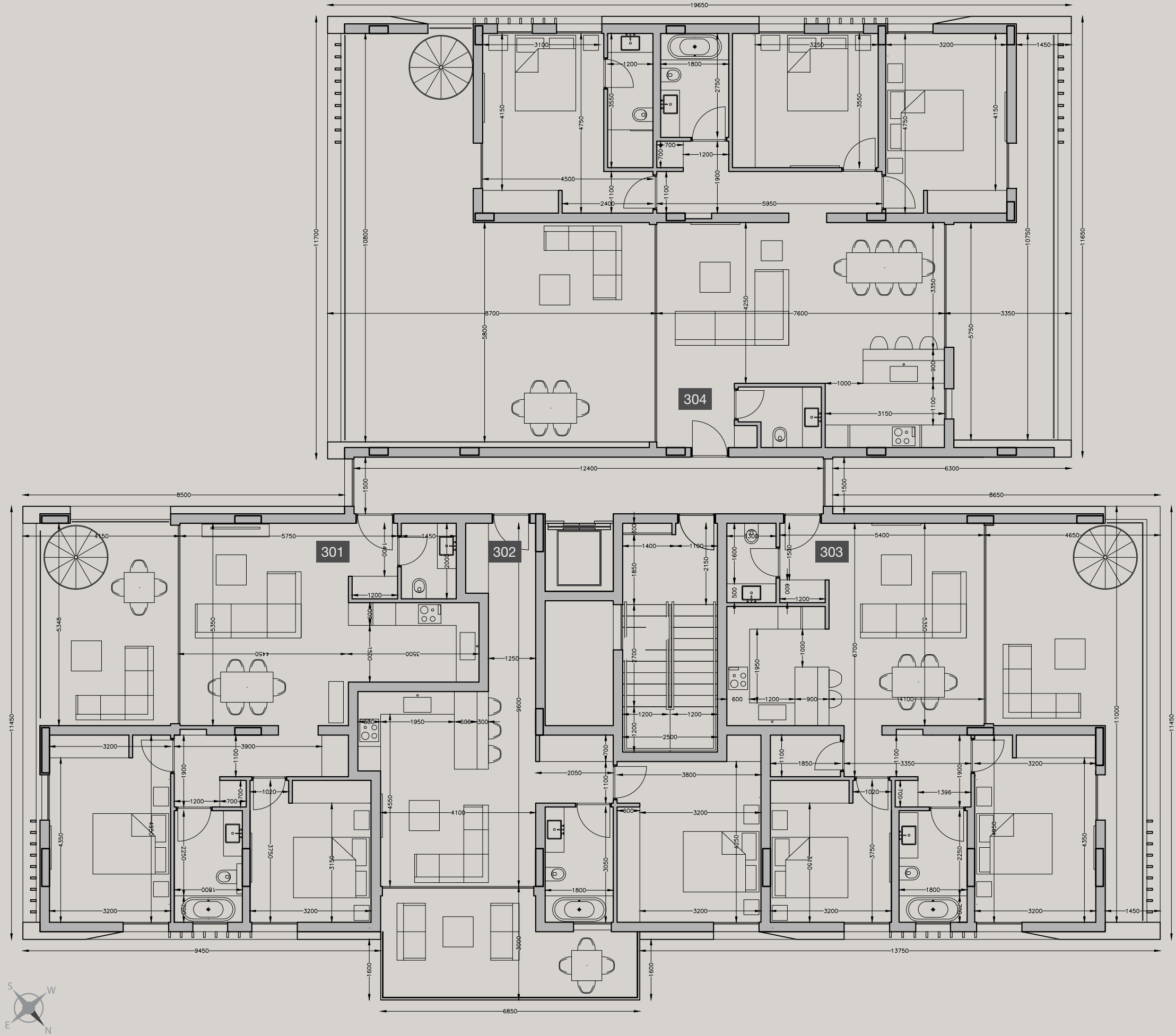


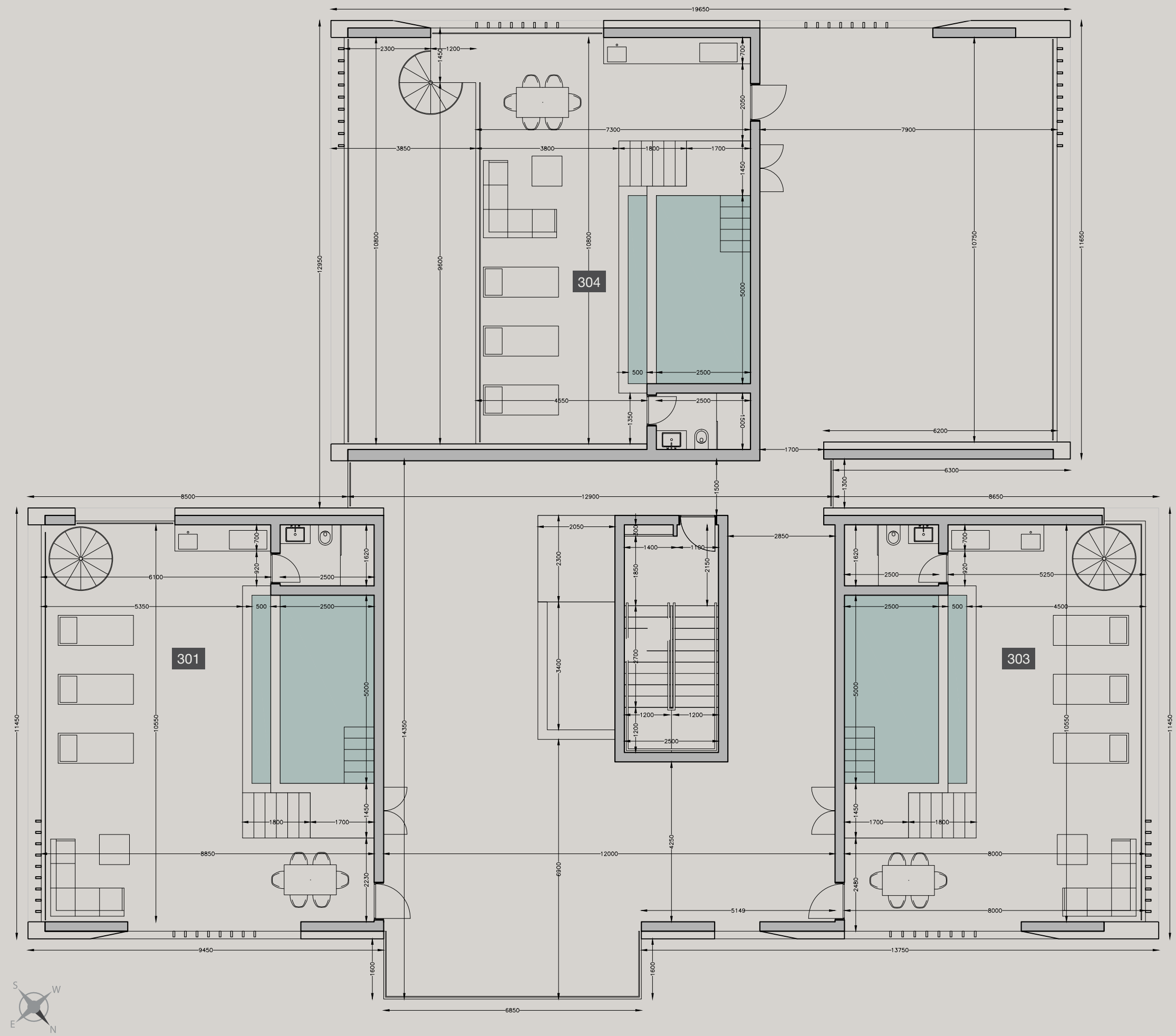




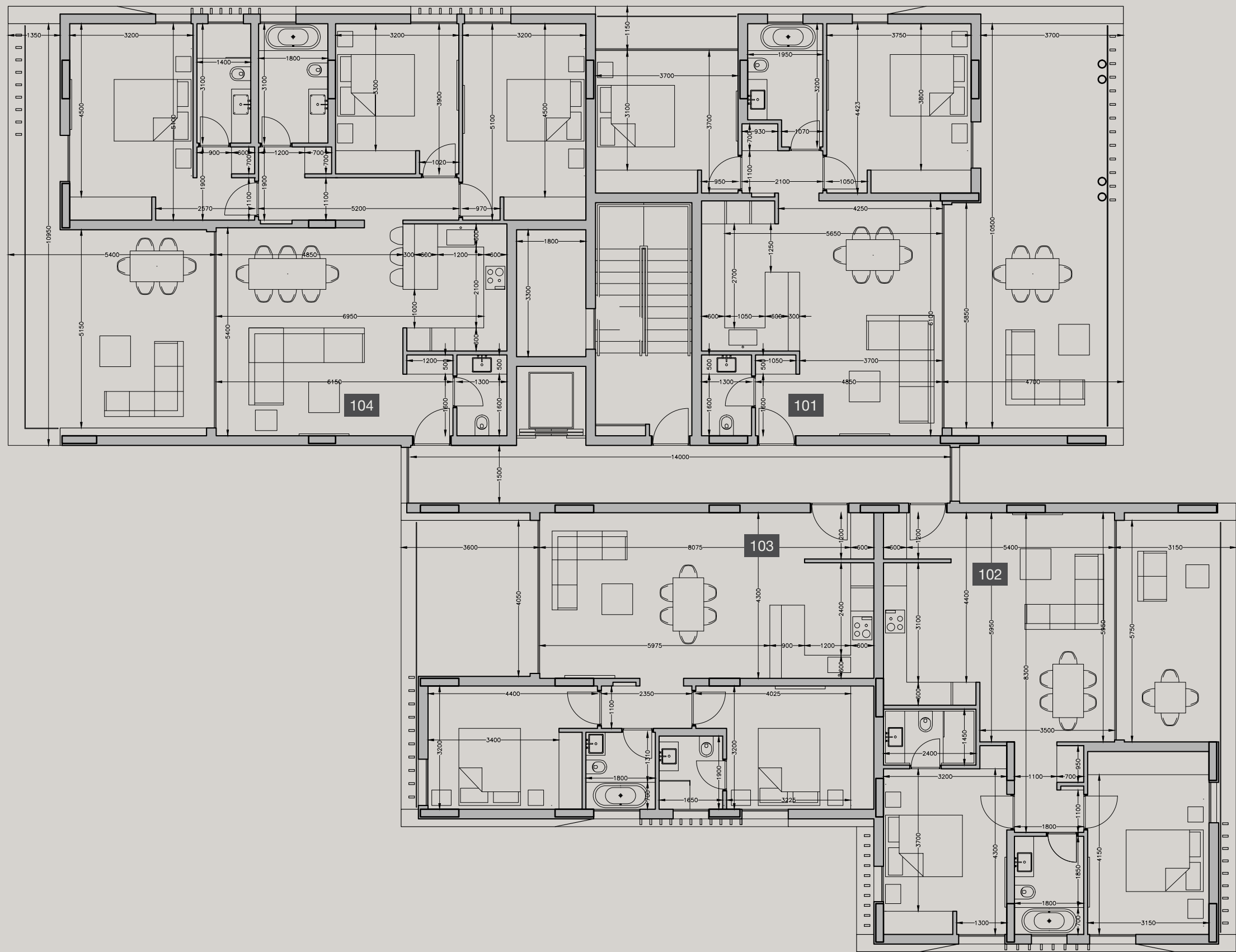


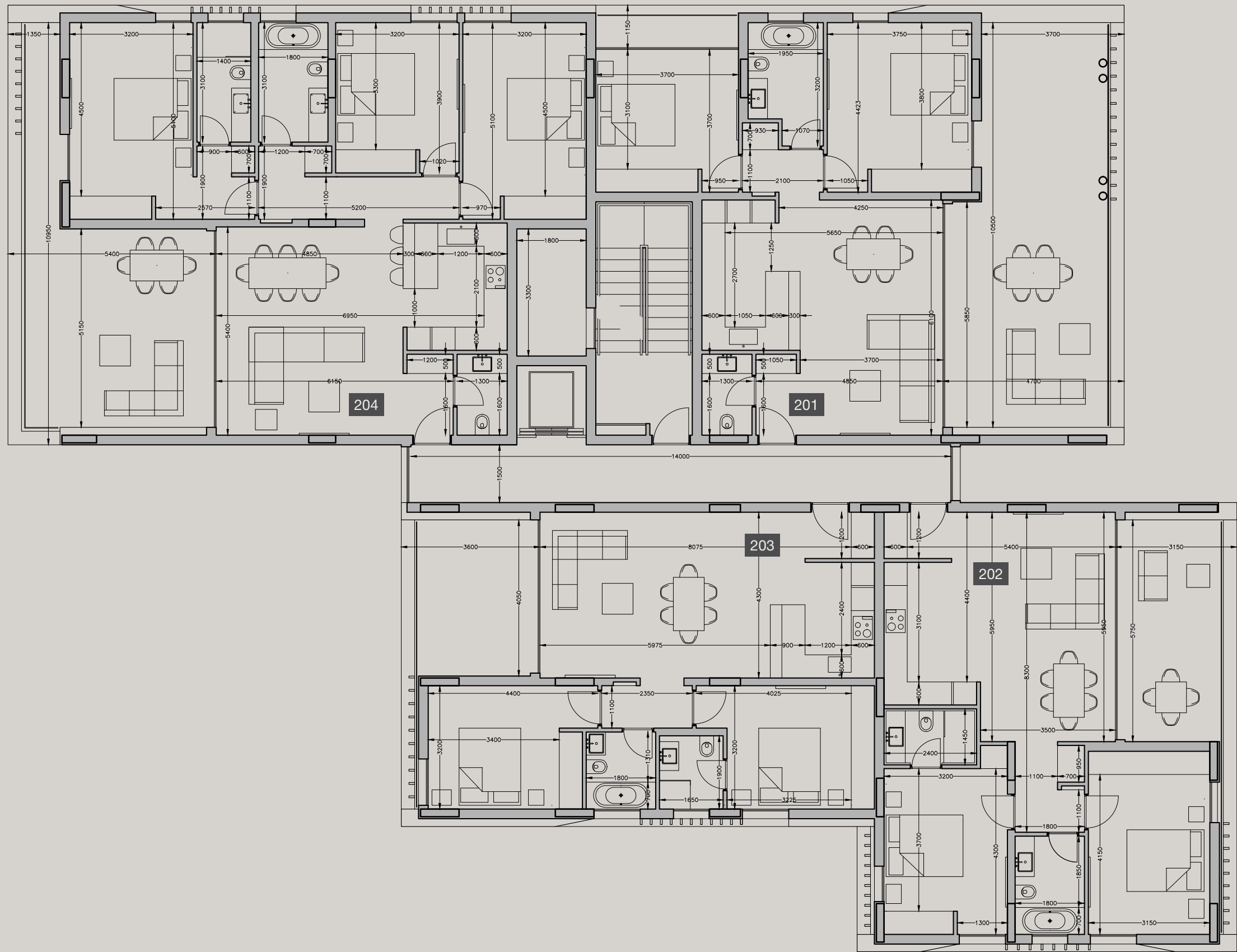


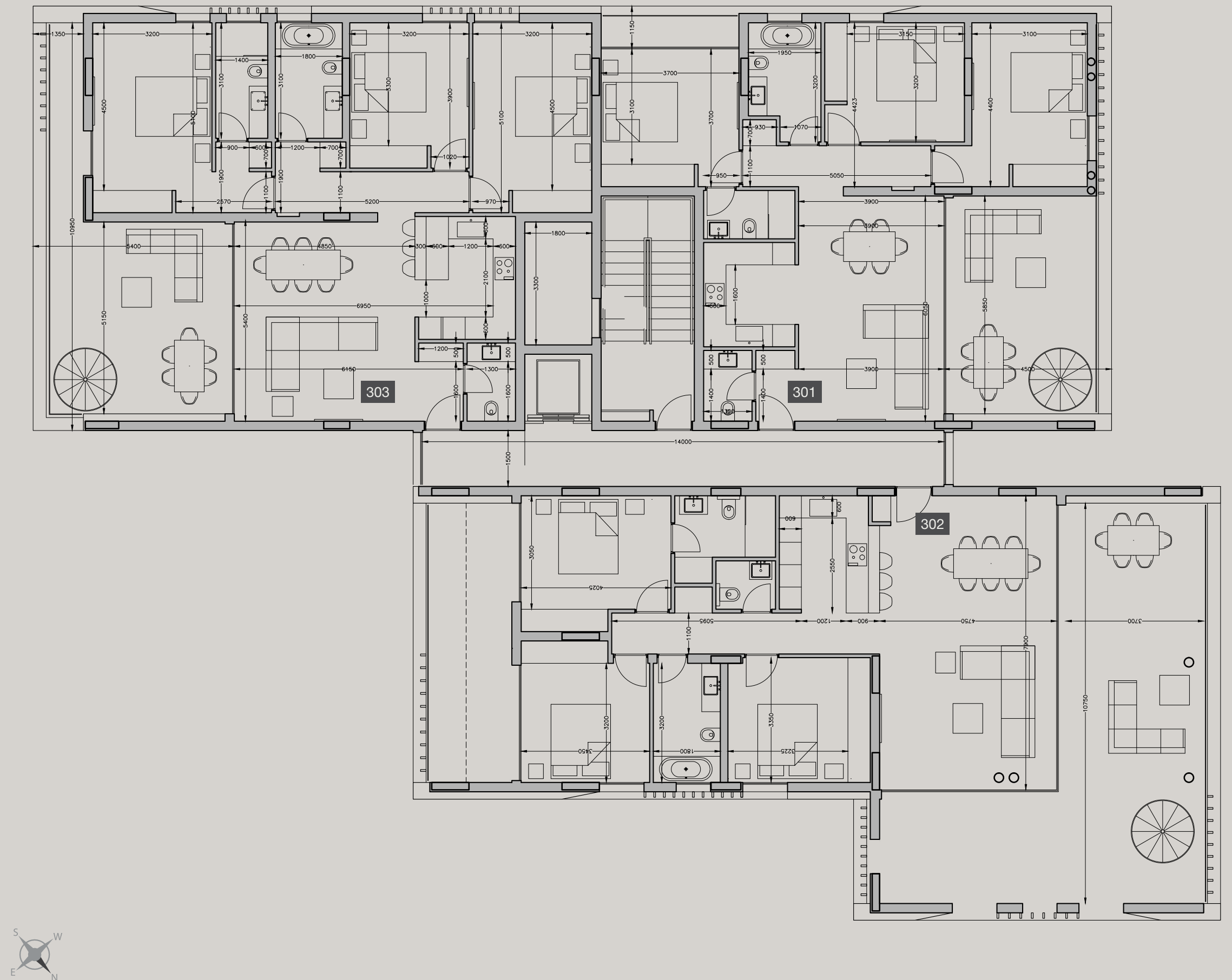


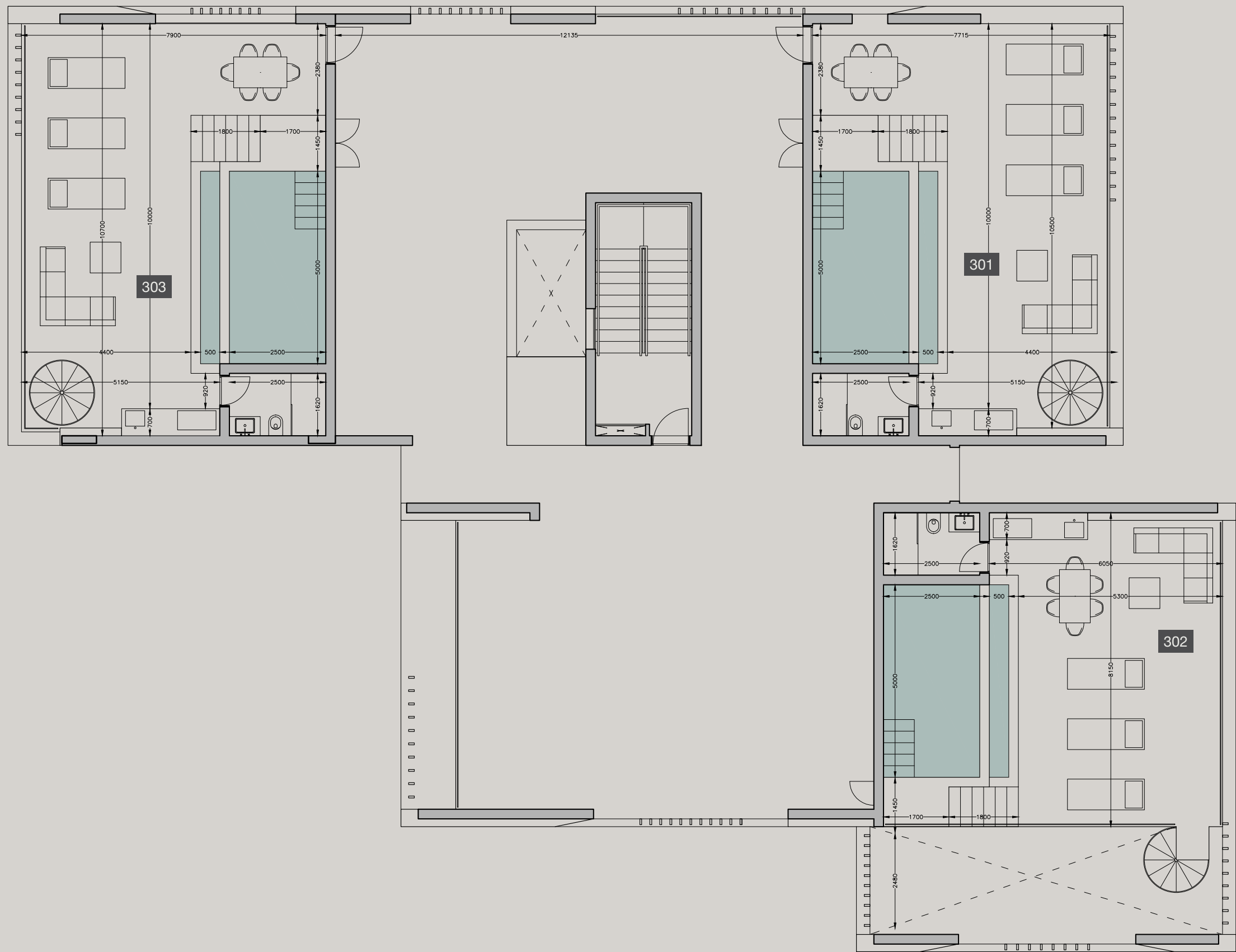














SIGNATURE FINISHES

ELEGANCE PACKAGE

EVERY PROPERTY IS DELIVERED WITH THE

- | Fully completed finishings
- | Parquet floors in living areas and bedrooms
- | Marble floor and walls in the toilets and bathrooms
- | High ceilings (3.15 m)
- | Security and fireproof entrance doors
- | Intercom system
- | Underfloor central heating
- | Central VRV conditioning
- | Highstandard sanitary ware from European brands
- | Thermal aluminum window frames with double glazing
- | High standard kitchen cabinets
- | High standard wardrobes from European brands
- | Soft closers
- | Door stoppers
- | Penthouses enjoy private roof terraces with pools

NOTE: movable furniture, home appliances & interior items are extras





SIGNATURE PENTHOUSES

WE HAVE REIMAGINED THE IDEA OF WHAT A PENTHOUSE SHOULD BE. THE SIGNATURE PENTHOUSES ARE FEATURED ALMOST IN ALL APARTMENT DEVELOPMENTS AND REPRESENT THE BEST CHOICE FOR A DEMANDING AND SOPHISTICATED CUSTOMER WHO EXPECTS THE BEST OF COMFORT, STYLE AND PRIVACY.

The signature penthouses enjoy:

- | Sizable roof space
- | Decking floors
- | Mosaic tiled swimming pool with jacuzzi
- | Barbecue

NOTE: movable furniture & interior items are extras



PERMANENT RESIDENCE PERMIT

UNIQUE CYPRUS PERMANENT RESIDENCY

Life-long validity

For all family members inc. children and parents

Possibility to own a business in Cyprus

The Cyprus Permanent Residence Program (PRP) grants the right to travel within the EU with less elaborate visa requirements and may be the first step towards a successful application for the Cyprus Investment Programme. We offer an "A to Z" service for non-EU citizens seeking residency in Cyprus by means of buying a property.

To be granted a life-long (permanent) residence permit in Cyprus, the applicant needs to purchase a new residential property or two new properties from the same property development company at a total price of 300 000 Euros excluding VAT. At the time of submission of the application, 200 000 Euros (excluding VAT) must be transferred in settlements of the property and the contract of sale must be registered at the Lands Office. The issuance of the Permanent Residence Permit takes approximately 2 months from the day of submission of all relevant documentation and covers all family members, including financial dependent children under 25 years old. A Cyprus Permanent Residence Permit allows the holder to stay in Cyprus all year round.

CYPRUS INVESTMENT PROGRAMME

APPLY SUCCESSFULLY THROUGH

Minimum investment: 2 mln EUR

The investment may be sold in 3 years

Visa-free residency in any European country

BENEFITS OF THE CYPRUS INVESTMENT

Obtaining Cyprus citizenship through the Cyprus Investment Programme enables successful applicants to enter, reside, study and work in the European economic area (European Union, Iceland, Liechtenstein, Norway and Switzerland) without a visa.

Successful applicants are entitled to maintain dual citizenship, which acts as an effective tool for international tax planning and provides financial privacy to the applicant.

Wide choice and combination of investment options.

Freedom to study in European universities paying lower tuition fees.

No residency requirements are imposed on citizens

The Cyprus Investment Programme enables successful applicants to travel to 158 countries without visa





28 Ampelakion Street, Germasogeia,
4046 Limassol, P.O.Box 70649, Cyprus
Office: +357 25 315 318 · Fax: +357 25 315 301

sales@prime-property.com

 [prime.property.group.ltd](https://www.facebook.com/prime.property.group.ltd)

www.prime-property.com